

GATA1 Antibody

Rabbit mAb

Catalog # AP91274

Product Information

Application	WB, IHC, IF, ICC, IP, IHF
Primary Accession	P15976
Reactivity	Human
Clonality	Monoclonal
Other Names	Erythroid transcription factor; Eryf1; GATA-binding factor 1; GATA-1; GF-1; NF-E1 DNA-binding protein; GATA1; ERYF1; GF1;
Isotype	Rabbit IgG
Host	Rabbit
Calculated MW	42751

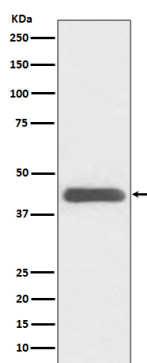
Additional Information

Dilution	WB 1:500~1:2000 IHC 1:50~1:200 ICC/IF 1:50~1:200 IP 1:50 ChIP
Purification	Affinity-chromatography
Immunogen	A synthesized peptide derived from human GATA1
Description	GATA-1 is the founding member of the GATA family and is required for erythroid and megakaryocytic cell development. Mutations in GATA-1 have been linked to many human diseases, including acute megakaryoblastic leukemia in Down syndrome children (DS-AMKL), X-linked thrombocytopenia, and gray platelet syndrome.
Storage Condition and Buffer	Rabbit IgG in phosphate buffered saline , pH 7.4, 150mM NaCl, 0.02% sodium azide and 50% glycerol. Store at +4°C short term. Store at -20°C long term. Avoid freeze / thaw cycle.

Protein Information

Name	GATA1
Synonyms	ERYF1, GF1
Function	Transcriptional activator or repressor which serves as a general switch factor for erythroid development (PubMed: 35030251). It binds to DNA sites with the consensus sequence 5'-[AT]GATA[AG]-3' within regulatory regions of globin genes and of other genes expressed in erythroid cells. Activates the transcription of genes involved in erythroid differentiation of K562 erythroleukemia cells, including HBB, HBG1/2, ALAS2 and HMBS (PubMed: 24245781).
Cellular Location	Nucleus.
Tissue Location	Erythrocytes..

Images



Western blot analysis of GATA1 expression in K562 cell lysate.

Image not found : 202311/AP91274-IHC.jpg

Immunohistochemical analysis of paraffin-embedded mouse spleen, using GATA1 Antibody.

Please note: All products are 'FOR RESEARCH USE ONLY. NOT FOR USE IN DIAGNOSTIC OR THERAPEUTIC PROCEDURES'.