

Profilin1 Antibody

Rabbit mAb

Catalog # AP91276

Product Information

Application	WB, IHC, IF, FC, ICC, IP, IHF
Primary Accession	P07737
Reactivity	Rat, Human, Mouse
Clonality	Monoclonal
Other Names	Actin binding protein; ALS18; Epididymis tissue protein Li 184a; PFN 1; Pfn; PFN1; Profilin1; ProfilinI;
Isotype	Rabbit IgG
Host	Rabbit
Calculated MW	15054

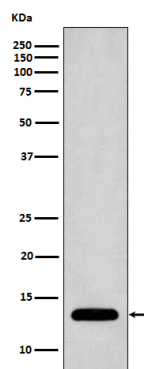
Additional Information

Dilution	WB 1:1000~1:5000 IHC 1:50~1:200 ICC/IF 1:50~1:200 IP 1:50 FC 1:200
Purification	Affinity-chromatography
Immunogen	A synthesized peptide derived from human Profilin1
Description	Binds to actin and affects the structure of the cytoskeleton. At high concentrations, profilin prevents the polymerization of actin, whereas it enhances it at low concentrations. By binding to PIP2, it inhibits the formation of IP3 and DG.
Storage Condition and Buffer	Rabbit IgG in phosphate buffered saline , pH 7.4, 150mM NaCl, 0.02% sodium azide and 50% glycerol. Store at +4°C short term. Store at -20°C long term. Avoid freeze / thaw cycle.

Protein Information

Name	PFN1
Function	Binds to actin and affects the structure of the cytoskeleton. At high concentrations, profilin prevents the polymerization of actin, whereas it enhances it at low concentrations. By binding to PIP2, it inhibits the formation of IP3 and DG. Inhibits androgen receptor (AR) and HTT aggregation and binding of G-actin is essential for its inhibition of AR.
Cellular Location	Cytoplasm, cytoskeleton.
Tissue Location	Expressed in epididymis (at protein level).

Images



Western blot analysis of Profilin1 expression in Jurkat cell lysate.

Please note: All products are 'FOR RESEARCH USE ONLY. NOT FOR USE IN DIAGNOSTIC OR THERAPEUTIC PROCEDURES'.