

MRP2 Antibody

Rabbit mAb

Catalog # AP91288

Product Information

| | |
|--------------------------|-----------------------------|
| Application | WB, IF, FC, ICC |
| Primary Accession | Q92887 |
| Reactivity | Human |
| Clonality | Monoclonal |
| Other Names | ABC30; abcc2; CMOAT1; cMRP; |
| Isotype | Rabbit IgG |
| Host | Rabbit |
| Calculated MW | 174207 |

Additional Information

| | |
|-------------------------------------|---|
| Dilution | WB 1:500~1:2000 ICC/IF 1:50~1:200 FC 1:100 |
| Purification | Affinity-chromatography |
| Immunogen | A synthesized peptide derived from human MRP2 |
| Description | Mediates hepatobiliary excretion of numerous organic anions. May function as a cellular cisplatin transporter. |
| Storage Condition and Buffer | Rabbit IgG in phosphate buffered saline , pH 7.4, 150mM NaCl, 0.02% sodium azide and 50% glycerol. Store at +4°C short term. Store at -20°C long term. Avoid freeze / thaw cycle. |

Protein Information

| | |
|-----------------|--|
| Name | ABCC2 (HGNC:53) |
| Function | ATP-dependent transporter of the ATP-binding cassette (ABC) family that binds and hydrolyzes ATP to enable active transport of various substrates including many drugs, toxicants and endogenous compound across cell membranes. Transports a wide variety of conjugated organic anions such as sulfate-, glucuronide- and glutathione (GSH)- conjugates of endo- and xenobiotics substrates (PubMed: 10220572 , PubMed: 10421658 , PubMed: 11500505 , PubMed: 16332456). Mediates hepatobiliary excretion of mono- and bis-glucuronidated bilirubin molecules and therefore play an important role in bilirubin detoxification (PubMed: 10421658). Also mediates hepatobiliary excretion of others glucuronide conjugates such as 17beta-estradiol 17- glucosiduronic acid and leukotriene C4 (PubMed: 11500505). Transports sulfated bile salt such as tauroolithocholate sulfate (PubMed: 16332456). Transports various anticancer drugs, such as anthracycline, vinca alkaloid and methotrexate and HIV-drugs such as protease inhibitors (PubMed: 10220572 , PubMed: 11500505 , PubMed: 12441801). Confers resistance to several anti-cancer drugs including cisplatin, doxorubicin, epirubicin, methotrexate, etoposide and vincristine |

(PubMed:[10220572](#), PubMed:[11500505](#)).

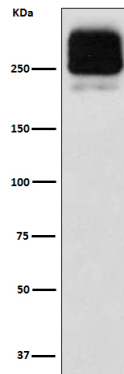
Cellular Location

Apical cell membrane; Multi-pass membrane protein. Note=Localized to the apical membrane of enterocytes

Tissue Location

Expressed by polarized cells in liver, kidney and intestine. The highest expression is found in liver. Expressed in small intestine (PubMed:28408210).

Images



Western blot analysis of MRP2 expression in HepG2 cell lysate.

Please note: All products are 'FOR RESEARCH USE ONLY. NOT FOR USE IN DIAGNOSTIC OR THERAPEUTIC PROCEDURES'.