

Annexin A2 Antibody

Rabbit mAb

Catalog # AP91291

Product Information

Application	WB, IHC, IF, FC, ICC, IHF
Primary Accession	P07355
Reactivity	Rat, Human, Mouse
Clonality	Monoclonal
Other Names	Annexin A2; Annexin II; Annexin-2; Calpactin I heavy chain; PAP-IV; Protein I; p36; ANXA2; ANX2; ANX2L4; CAL1H; LPC2D; Annexin2; HEL S 270;
Isotype	Rabbit IgG
Host	Rabbit
Calculated MW	38604

Additional Information

Dilution	WB 1:500~1:2000 IHC 1:50~1:200 ICC/IF 1:50~1:200 FC 1:50
Purification	Affinity-chromatography
Immunogen	A synthesized peptide derived from human Annexin A2
Description	Originally identified as a protein inhibitor of phospholipase A2, annexin A2 has subsequently been shown to interact with an array of protein and non-protein partners, including F-actin, spectrin, SNARE complexes, RNA, and virus particles.
Storage Condition and Buffer	Rabbit IgG in phosphate buffered saline , pH 7.4, 150mM NaCl, 0.02% sodium azide and 50% glycerol. Store at +4°C short term. Store at -20°C long term. Avoid freeze / thaw cycle.

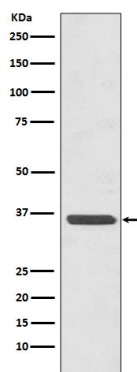
Protein Information

Name	ANXA2
Synonyms	ANX2, ANX2L4, CAL1H, LPC2D
Function	Calcium-regulated membrane-binding protein whose affinity for calcium is greatly enhanced by anionic phospholipids. It binds two calcium ions with high affinity. May be involved in heat-stress response. Inhibits PCSK9-enhanced LDLR degradation, probably reduces PCSK9 protein levels via a translational mechanism but also competes with LDLR for binding with PCSK9 (PubMed: 18799458 , PubMed: 22848640 , PubMed: 24808179). Binds to endosomes damaged by phagocytosis of particulate wear debris and participates in endosomal membrane stabilization, thereby limiting NLRP3 inflammasome activation (By similarity). Required for endothelial cell surface plasmin generation and may support fibrinolytic surveillance and neoangiogenesis (By similarity).

Cellular Location

Secreted, extracellular space, extracellular matrix, basement membrane. Melanosome. Note=In the lamina beneath the plasma membrane. Identified by mass spectrometry in melanosome fractions from stage I to stage IV. Translocated from the cytoplasm to the cell surface through a Golgi-independent mechanism

Images



Western blot analysis of Annexin A2 expression in HeLa cell lysate.

Please note: All products are 'FOR RESEARCH USE ONLY. NOT FOR USE IN DIAGNOSTIC OR THERAPEUTIC PROCEDURES'.