

GCET1 Antibody

Rabbit mAb

Catalog # AP91293

Product Information

Application	WB
Primary Accession	Q86WD7
Reactivity	Rat, Human, Mouse
Clonality	Monoclonal
Other Names	Centerin; GCET1; Seprin A9; SERPINA11; SERPINA11b; Serpina9;
Isotype	Rabbit IgG
Host	Rabbit
Calculated MW	46557

Additional Information

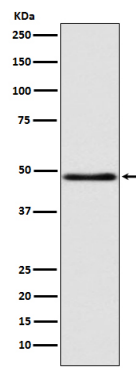
Dilution	WB 1:500~1:2000
Purification	Affinity-chromatography
Immunogen	A synthesized peptide derived from human GCET1
Description	Protease inhibitor that inhibits trypsin and trypsin-like serine proteases (in vitro). Inhibits plasmin and thrombin with lower efficiency (in vitro).
Storage Condition and Buffer	Rabbit IgG in phosphate buffered saline , pH 7.4, 150mM NaCl, 0.02% sodium azide and 50% glycerol. Store at +4°C short term. Store at -20°C long term. Avoid freeze / thaw cycle.

Protein Information

Name	SERPINA9
Synonyms	GCET1, SERPINA11
Function	Protease inhibitor that inhibits trypsin and trypsin-like serine proteases (in vitro). Inhibits plasmin and thrombin with lower efficiency (in vitro).
Cellular Location	[Isoform 1]: Secreted. [Isoform 3]: Cytoplasm. [Isoform 5]: Cytoplasm. [Isoform 7]: Membrane; Single-pass type II membrane protein
Tissue Location	Highly expressed in normal germinal center (GC) B- cells and GC B-cell-derived malignancies.

Images

Western blot analysis of GCET1 expression in MCF7 cell lysate.



Please note: All products are 'FOR RESEARCH USE ONLY. NOT FOR USE IN DIAGNOSTIC OR THERAPEUTIC PROCEDURES'.