

Involucrin Antibody

Rabbit mAb

Catalog # AP91295

Product Information

Application	WB, IHC, FC
Primary Accession	P07476
Reactivity	Rat, Human
Clonality	Monoclonal
Other Names	Involucrin; IVL;

Isotype	Rabbit IgG
Host	Rabbit
Calculated MW	68479

Additional Information

Dilution	WB 1:1000~1:5000 IHC 1:50~1:200 FC 1:10
Purification	Affinity-chromatography
Immunogen	A synthesized peptide derived from human Involucrin
Description	Part of the insoluble cornified cell envelope (CE) of stratified squamous epithelia.
Storage Condition and Buffer	Rabbit IgG in phosphate buffered saline , pH 7.4, 150mM NaCl, 0.02% sodium azide and 50% glycerol. Store at +4°C short term. Store at -20°C long term. Avoid freeze / thaw cycle.

Protein Information

Name	IVL
Function	Part of the insoluble cornified cell envelope (CE) of stratified squamous epithelia.
Cellular Location	Cytoplasm. Note=Constituent of the scaffolding of the cornified envelope
Tissue Location	Keratinocytes of epidermis and other stratified squamous epithelia

Images

Western blot analysis of Involucrin expression in A431 cell lysate.

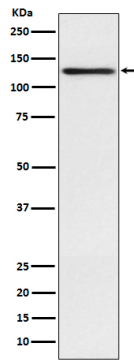


Image not found : 202311/AP91295-wb6.jpg

Fibulin-3 has anti-tumorigenic activities in cutaneous squamous cell carcinoma. -Journal of Investigative Dermatology

Please note: All products are 'FOR RESEARCH USE ONLY. NOT FOR USE IN DIAGNOSTIC OR THERAPEUTIC PROCEDURES'.