

CLRN3 Antibody (C-term)

Affinity Purified Rabbit Polyclonal Antibody (Pab)

Catalog # AP9129b

Product Information

| | |
|--------------------------|------------------------|
| Application | WB, FC, E |
| Primary Accession | Q8NCR9 |
| Reactivity | Human |
| Host | Rabbit |
| Clonality | Polyclonal |
| Isotype | Rabbit IgG |
| Clone Names | RB22368 |
| Calculated MW | 25321 |
| Antigen Region | 196-222 |

Additional Information

| | |
|---------------------------|------------------------------------------------------------------------------------------------------------------------------------------------------------------------------|
| Gene ID | 119467 |
| Other Names | Clarin-3, Transmembrane protein 12, Usher syndrome type-3A-like protein 1, CLRN3, TMEM12, USH3AL1 |
| Target/Specificity | This CLRN3 antibody is generated from rabbits immunized with a KLH conjugated synthetic peptide between 196-222 amino acids from the C-terminal region of human CLRN3. |
| Dilution | WB~~1:1000 FC~~1:10~50 E~~Use at an assay dependent concentration. |
| Format | Purified polyclonal antibody supplied in PBS with 0.09% (W/V) sodium azide. This antibody is purified through a protein A column, followed by peptide affinity purification. |
| Storage | Maintain refrigerated at 2-8°C for up to 2 weeks. For long term storage store at -20°C in small aliquots to prevent freeze-thaw cycles. |
| Precautions | CLRN3 Antibody (C-term) is for research use only and not for use in diagnostic or therapeutic procedures. |

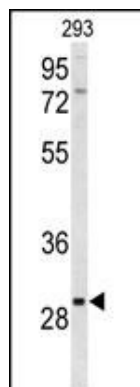
Protein Information

| | |
|--------------------------|---------------------------------------|
| Name | CLRN3 |
| Synonyms | TMEM12, USH3AL1 |
| Cellular Location | Membrane; Multi-pass membrane protein |

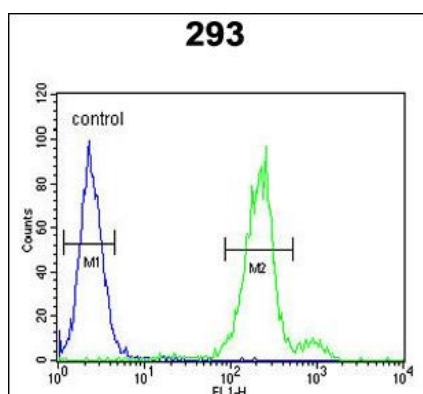
References

Fields,R.R., et.al., Am. J. Hum. Genet. 71 (3), 607-617 (2002)

Images



Western blot analysis of CLRN3 Antibody (C-term) (Cat. #AP9129b) in 293 cell line lysates (35ug/lane). CLRN3 (arrow) was detected using the purified Pab.



CLRN3 Antibody (C-term) (Cat. #AP9129b) flow cytometric analysis of 293 cells (right histogram) compared to a negative control cell (left histogram). FITC-conjugated goat-anti-rabbit secondary antibodies were used for the analysis.

Please note: All products are 'FOR RESEARCH USE ONLY. NOT FOR USE IN DIAGNOSTIC OR THERAPEUTIC PROCEDURES'.