

PCSK9 Antibody

Rabbit mAb

Catalog # AP91306

Product Information

Application	WB, IP
Primary Accession	Q8NBP7
Reactivity	Human
Clonality	Monoclonal
Other Names	HCHOLA3; LDLCQ1; NARC1; Neural apoptosis regulated convertase 1; PC9; PCSK9; Proprotein convertase 9;
Isotype	Rabbit IgG
Host	Rabbit
Calculated MW	74286

Additional Information

Dilution	WB 1:500~1:2000 IP 1:20
Purification	Affinity-chromatography
Immunogen	A synthesized peptide derived from human PCSK9
Description	May be implicated in the differentiation of cortical neurons and may play a role in cholesterol homeostasis.
Storage Condition and Buffer	Rabbit IgG in phosphate buffered saline , pH 7.4, 150mM NaCl, 0.02% sodium azide and 50% glycerol. Store at +4°C short term. Store at -20°C long term. Avoid freeze / thaw cycle.

Protein Information

Name	PCSK9
Synonyms	NARC1
Function	Crucial player in the regulation of plasma cholesterol homeostasis. Binds to low-density lipid receptor family members: low density lipoprotein receptor (LDLR), very low density lipoprotein receptor (VLDLR), apolipoprotein E receptor (LRP1/APOER) and apolipoprotein receptor 2 (LRP8/APOER2), and promotes their degradation in intracellular acidic compartments (PubMed: 18039658). Acts via a non- proteolytic mechanism to enhance the degradation of the hepatic LDLR through a clathrin LDLRAP1/ARH-mediated pathway. May prevent the recycling of LDLR from endosomes to the cell surface or direct it to lysosomes for degradation. Can induce ubiquitination of LDLR leading to its subsequent degradation (PubMed: 17461796 , PubMed: 18197702 , PubMed: 18799458 , PubMed: 22074827). Inhibits intracellular degradation of APOB via the autophagosome/lysosome pathway in a LDLR-independent manner. Involved in the disposal of non-acetylated intermediates of BACE1 in the early secretory pathway (PubMed: 18660751).

Inhibits epithelial Na(+)-channel (ENaC)-mediated Na(+) absorption by reducing ENaC surface expression primarily by increasing its proteasomal degradation. Regulates neuronal apoptosis via modulation of LRP8/APOER2 levels and related anti-apoptotic signaling pathways.

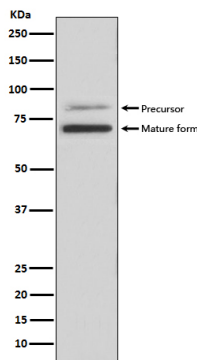
Cellular Location

Cytoplasm. Secreted. Endosome. Lysosome. Cell surface. Endoplasmic reticulum. Golgi apparatus. Note=Autocatalytic cleavage is required to transport it from the endoplasmic reticulum to the Golgi apparatus and for the secretion of the mature protein Localizes to the endoplasmic reticulum in the absence of LDLR and colocalizes to the cell surface and to the endosomes/lysosomes in the presence of LDLR. The sorting to the cell surface and endosomes is required in order to fully promote LDLR degradation

Tissue Location

Expressed in neuro-epithelioma, colon carcinoma, hepatic and pancreatic cell lines, and in Schwann cells

Images



Western blot analysis of PCSK9 expression in HepG2 cell lysate.

Please note: All products are 'FOR RESEARCH USE ONLY. NOT FOR USE IN DIAGNOSTIC OR THERAPEUTIC PROCEDURES'.