

MRP1 Antibody

Rabbit mAb

Catalog # AP91308

Product Information

Application	WB, FC
Primary Accession	P33527
Reactivity	Human
Clonality	Monoclonal
Other Names	ABC29; Abcc1; GSX; Leukotriene C(4) transporter; LTC4 transporter; MRP1;
Isotype	Rabbit IgG
Host	Rabbit
Calculated MW	171591

Additional Information

Dilution	WB 1:500~1:2000 FC 1:20
Purification	Affinity-chromatography
Immunogen	A synthesized peptide derived from human MRP1
Description	Mediates export of organic anions and drugs from the cytoplasm. Mediates ATP-dependent transport of glutathione and glutathione conjugates, leukotriene C4, estradiol-17-beta-o-glucuronide, methotrexate, antiviral drugs and other xenobiotics. Confers resistance to anticancer drugs. Hydrolyzes ATP with low efficiency.
Storage Condition and Buffer	Rabbit IgG in phosphate buffered saline , pH 7.4, 150mM NaCl, 0.02% sodium azide and 50% glycerol. Store at +4°C short term. Store at -20°C long term. Avoid freeze / thaw cycle.

Protein Information

Name	ABCC1 (HGNC:51)
Synonyms	MRP, MRP1
Function	Mediates export of organic anions and drugs from the cytoplasm (PubMed: 10064732 , PubMed: 11114332 , PubMed: 16230346 , PubMed: 7961706 , PubMed: 9281595). Mediates ATP-dependent transport of glutathione and glutathione conjugates, leukotriene C4, estradiol-17-beta-o-glucuronide, methotrexate, antiviral drugs and other xenobiotics (PubMed: 10064732 , PubMed: 11114332 , PubMed: 16230346 , PubMed: 7961706 , PubMed: 9281595). Confers resistance to anticancer drugs by decreasing accumulation of drug in cells, and by mediating ATP- and GSH-dependent drug export (PubMed: 9281595). Hydrolyzes ATP with low efficiency (PubMed: 16230346). Catalyzes the export of sphingosine 1-phosphate from mast cells independently of their degranulation (PubMed: 17050692). Participates in inflammatory response by allowing

export of leukotriene C4 from leukotriene C4-synthesizing cells (By similarity). Mediates ATP-dependent, GSH-independent cyclic GMP-AMP (cGAMP) export (PubMed:[36070769](#)). Thus, by limiting intracellular cGAMP concentrations negatively regulates the cGAS-STING pathway (PubMed:[36070769](#)). Exports S-geranylgeranyl-glutathione (GGG) in lymphoid cells and stromal compartments of lymphoid organs. ABCC1 (via extracellular transport) with GGT5 (via GGG catabolism) establish GGG gradients within lymphoid tissues to position P2RY8-positive lymphocytes at germinal centers in lymphoid follicles and restrict their chemotactic transmigration from blood vessels to the bone marrow parenchyma (By similarity). Mediates basolateral export of GSH-conjugated R- and S-prostaglandin A2 diastereomers in polarized epithelial cells (PubMed:[9426231](#)).

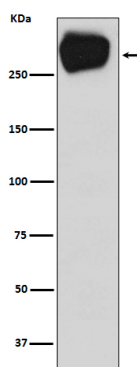
Cellular Location

Cell membrane; Multi-pass membrane protein. Basolateral cell membrane; Multi-pass membrane protein

Tissue Location

Lung, testis and peripheral blood mononuclear cells

Images



Western blot analysis of MRP1 expression in A431 cell lysate.

Please note: All products are 'FOR RESEARCH USE ONLY. NOT FOR USE IN DIAGNOSTIC OR THERAPEUTIC PROCEDURES'.