

Calpain 1 Antibody

Rabbit mAb

Catalog # AP91313

Product Information

| | |
|--------------------------|---------------------------------------------------------------------------------------------------------------|
| Application | WB, IHC, IF, FC, ICC, IHF |
| Primary Accession | P07384 |
| Reactivity | Rat, Human, Mouse |
| Clonality | Monoclonal |
| Other Names | Calpain-1 catalytic subunit; CANP; CANP small subunit; CANPL1; CAPN1; Micromolar Calpain; Mu Calpain; muCANP; |
| Isotype | Rabbit IgG |
| Host | Rabbit |
| Calculated MW | 81890 |

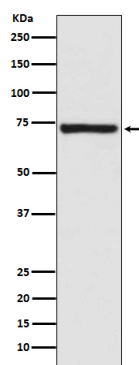
Additional Information

| | |
|-------------------------------------|-----------------------------------------------------------------------------------------------------------------------------------------------------------------------------------|
| Dilution | WB 1:500~1:2000 IHC 1:50~1:200 ICC/IF 1:50~1:200 FC 1:100 |
| Purification | Affinity-chromatography |
| Immunogen | A synthesized peptide derived from human Calpain 1 |
| Description | Calcium-regulated non-lysosomal thiol-protease which catalyze limited proteolysis of substrates involved in cytoskeletal remodeling and signal transduction. |
| Storage Condition and Buffer | Rabbit IgG in phosphate buffered saline , pH 7.4, 150mM NaCl, 0.02% sodium azide and 50% glycerol. Store at +4°C short term. Store at -20°C long term. Avoid freeze / thaw cycle. |

Protein Information

| | |
|--------------------------|--------------------------------------------------------------------------------------------------------------------------------------------------------------------------------------------------------------------------------------------------------------------------------------------------------------------------------------------------------------------------------------------------------------------------------------------------------------|
| Name | CAPN1 (HGNC:1476) |
| Synonyms | CANPL1 |
| Function | Calcium-regulated non-lysosomal thiol-protease which catalyzes limited proteolysis of substrates involved in cytoskeletal remodeling and signal transduction (PubMed: 19617626 , PubMed: 21531719 , PubMed: 2400579). Proteolytically cleaves CTBP1 at 'Asn-375', 'Gly-387' and 'His-409' (PubMed: 23707407). Cleaves and activates caspase-7 (CASP7) (PubMed: 19617626). |
| Cellular Location | Cytoplasm. Cell membrane. Note=Translocates to the plasma membrane upon Ca(2+) binding. In granular keratinocytes and in lower corneocytes, colocalizes with FLG and FLG2 (PubMed:21531719) |
| Tissue Location | Ubiquitous. |

Images



Western blot analysis of Calpain 1 expression in Human fetal kidney lysate.

Please note: All products are 'FOR RESEARCH USE ONLY. NOT FOR USE IN DIAGNOSTIC OR THERAPEUTIC PROCEDURES'.