

# gamma Sarcoglycan Antibody

Rabbit mAb

Catalog # AP91318

## Product Information

<b>Application</b>	WB, IHC, IP
<b>Primary Accession</b>	<a href="#">Q13326</a>
<b>Reactivity</b>	Human
<b>Clonality</b>	Monoclonal
<b>Other Names</b>	35DAG; DAGA4; DMDA; Gamma-sarcoglycan; LGMD2C; MAM; Sarcoglycan gamma; SCARMD2; SCG3; SGCG; TYPE;
<b>Isotype</b>	Rabbit IgG
<b>Host</b>	Rabbit
<b>Calculated MW</b>	32379

## Additional Information

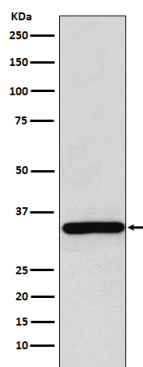
<b>Dilution</b>	WB 1:500~1:2000 IHC 1:50~1:200 IP 1:50
<b>Purification</b>	Affinity-chromatography
<b>Immunogen</b>	A synthesized peptide derived from human gamma Sarcoglycan
<b>Description</b>	Component of the sarcoglycan complex, a subcomplex of the dystrophin-glycoprotein complex which forms a link between the F-actin cytoskeleton and the extracellular matrix.
<b>Storage Condition and Buffer</b>	Rabbit IgG in phosphate buffered saline , pH 7.4, 150mM NaCl, 0.02% sodium azide and 50% glycerol. Store at +4°C short term. Store at -20°C long term. Avoid freeze / thaw cycle.

## Protein Information

<b>Name</b>	SGCG
<b>Function</b>	Component of the sarcoglycan complex, a subcomplex of the dystrophin-glycoprotein complex which forms a link between the F-actin cytoskeleton and the extracellular matrix.
<b>Cellular Location</b>	Cell membrane, sarcolemma; Single- pass type II membrane protein. Cytoplasm, cytoskeleton
<b>Tissue Location</b>	Expressed in skeletal and heart muscle.

## Images

Western blot analysis of gamma Sarcoglycan expression in Human skeletal muscle lysate.



Please note: All products are 'FOR RESEARCH USE ONLY. NOT FOR USE IN DIAGNOSTIC OR THERAPEUTIC PROCEDURES'.