

alpha Sarcoglycan Antibody

Rabbit mAb

Catalog # AP91319

Product Information

Application	WB, IHC, IP
Primary Accession	Q16586
Reactivity	Rat, Human, Mouse
Clonality	Monoclonal
Other Names	50DAG; 50kD DAG; adhalin; ADL; Alpha SG; Alpha-sarcoglycan; Asg; DAG2; DMDA2; Dystroglycan 2; LGMD2D; SCARMD1; Sgca;
Isotype	Rabbit IgG
Host	Rabbit
Calculated MW	42875

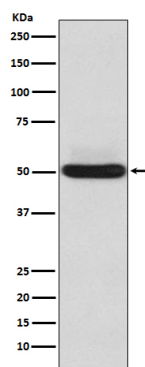
Additional Information

Dilution	WB 1:500~1:2000 IHC 1:100~1:500 IP 1:40
Purification	Affinity-chromatography
Immunogen	A synthesized peptide derived from human alpha Sarcoglycan
Description	Component of the sarcoglycan complex, a subcomplex of the dystrophin-glycoprotein complex which forms a link between the F-actin cytoskeleton and the extracellular matrix.
Storage Condition and Buffer	Rabbit IgG in phosphate buffered saline , pH 7.4, 150mM NaCl, 0.02% sodium azide and 50% glycerol. Store at +4°C short term. Store at -20°C long term. Avoid freeze / thaw cycle.

Protein Information

Name	SGCA
Synonyms	ADL, DAG2
Function	Component of the sarcoglycan complex, a subcomplex of the dystrophin-glycoprotein complex which forms a link between the F-actin cytoskeleton and the extracellular matrix.
Cellular Location	Cell membrane, sarcolemma; Single-pass type I membrane protein. Cytoplasm, cytoskeleton
Tissue Location	Most strongly expressed in skeletal muscle. Also expressed in cardiac muscle and, at much lower levels, in lung. In the fetus, most abundant in cardiac muscle and, at lower levels, in lung Also detected in liver and kidney. Not expressed in brain

Images



Western blot analysis of alpha Sarcoglycan expression in Human skeletal muscle lysate.

Please note: All products are 'FOR RESEARCH USE ONLY. NOT FOR USE IN DIAGNOSTIC OR THERAPEUTIC PROCEDURES'.