

GLUT3 Antibody

Rabbit mAb

Catalog # AP91326

Product Information

Application	WB
Primary Accession	P11169
Reactivity	Rat, Human, Mouse
Clonality	Monoclonal
Other Names	brain; Glucose transporter type 3; GLUT3; Slc2a3;
Isotype	Rabbit IgG
Host	Rabbit
Calculated MW	53924

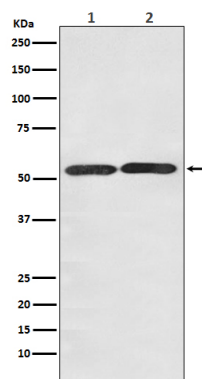
Additional Information

Dilution	WB 1:500~1:2000
Purification	Affinity-chromatography
Immunogen	A synthesized peptide derived from human GLUT3
Description	Facilitative glucose transporter. Probably a neuronal glucose transporter.
Storage Condition and Buffer	Rabbit IgG in phosphate buffered saline , pH 7.4, 150mM NaCl, 0.02% sodium azide and 50% glycerol. Store at +4°C short term. Store at -20°C long term. Avoid freeze / thaw cycle.

Protein Information

Name	SLC2A3 (HGNC:11007)
Function	Facilitative glucose transporter (PubMed: 26176916 , PubMed: 32860739 , PubMed: 9477959). Can also mediate the uptake of various other monosaccharides across the cell membrane (PubMed: 26176916 , PubMed: 9477959). Mediates the uptake of glucose, 2- deoxyglucose, galactose, mannose, xylose and fucose, and probably also dehydroascorbate (PubMed: 26176916 , PubMed: 9477959). Does not mediate fructose transport (PubMed: 26176916 , PubMed: 9477959). Required for mesendoderm differentiation (By similarity).
Cellular Location	Cell membrane; Multi-pass membrane protein. Perikaryon {ECO:0000250 UniProtKB:Q07647}. Cell projection {ECO:0000250 UniProtKB:Q07647}. Note=Localized to densely spaced patches along neuronal processes. {ECO:0000250 UniProtKB:Q07647}
Tissue Location	Highly expressed in brain (PubMed:8457197). Expressed in many tissues.

Images



Western blot analysis of GLUT3 expression in (1) HepG2 cell lysate; (2) NIH/3T3 cell lysate.

Please note: All products are 'FOR RESEARCH USE ONLY. NOT FOR USE IN DIAGNOSTIC OR THERAPEUTIC PROCEDURES'.