

MYH11 Antibody

Rabbit mAb

Catalog # AP91328

Product Information

Application	WB, IHC, IF, ICC, IHF
Primary Accession	P35749
Reactivity	Human
Clonality	Monoclonal
Other Names	AAT4; FAA4; MYH11; Myosin 11; Myosin heavy chain 11; Myosin heavy chain smooth muscle isoform; Myosin heavy polypeptide 11 smooth muscle; SMHC; SMMHC;
Isotype	Rabbit IgG
Host	Rabbit
Calculated MW	227339

Additional Information

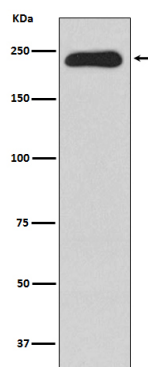
Dilution	WB 1:500~1:2000 IHC 1:50~1:200 ICC/IF 1:50~1:200
Purification	Affinity-chromatography
Immunogen	A synthesized peptide derived from human MYH11
Description	Muscle contraction.
Storage Condition and Buffer	Rabbit IgG in phosphate buffered saline , pH 7.4, 150mM NaCl, 0.02% sodium azide and 50% glycerol. Store at +4°C short term. Store at -20°C long term. Avoid freeze / thaw cycle.

Protein Information

Name	MYH11
Synonyms	KIAA0866
Function	Muscle contraction.
Cellular Location	Melanosome. Note=Identified by mass spectrometry in melanosome fractions from stage I to stage IV. Thick filaments of the myofibrils
Tissue Location	Smooth muscle; expressed in the umbilical artery, bladder, esophagus and trachea. Isoform 1 is mostly found in slowly contracting tonic muscles.

Images

Western blot analysis of MYH11 expression in Human testis lysate.



Please note: All products are 'FOR RESEARCH USE ONLY. NOT FOR USE IN DIAGNOSTIC OR THERAPEUTIC PROCEDURES'.