

PAI1 Antibody

Rabbit mAb

Catalog # AP91331

Product Information

Application	WB, IF, FC, ICC, IP
Primary Accession	P05121
Reactivity	Human
Clonality	Monoclonal
Other Names	PAI-1; PAI-1; PAI; Endothelial plasminogen activator inhibitor; SERPINE1; PAI1; PLANH1; Serpine 1;
Isotype	Rabbit IgG
Host	Rabbit
Calculated MW	45060

Additional Information

Dilution	WB 1:500~1:1000 ICC/IF 1:50~1:200 IP 1:30 FC 1:50
Purification	Affinity-chromatography
Immunogen	A synthesized peptide derived from human PAI1
Description	This inhibitor acts as 'bait' for tissue plasminogen activator, urokinase, and protein C. Its rapid interaction with TPA may function as a major control point in the regulation of fibrinolysis.
Storage Condition and Buffer	Rabbit IgG in phosphate buffered saline , pH 7.4, 150mM NaCl, 0.02% sodium azide and 50% glycerol. Store at +4°C short term. Store at -20°C long term. Avoid freeze / thaw cycle.

Protein Information

Name	SERPINE1
Synonyms	PAI1, PLANH1
Function	Serine protease inhibitor. Inhibits TMPRSS7 (PubMed: 15853774). Is a primary inhibitor of tissue-type plasminogen activator (PLAT) and urokinase-type plasminogen activator (PLAU). As PLAT inhibitor, it is required for fibrinolysis down-regulation and is responsible for the controlled degradation of blood clots (PubMed: 17912461 , PubMed: 8481516 , PubMed: 9207454 , PubMed: 21925150). As PLAU inhibitor, it is involved in the regulation of cell adhesion and spreading (PubMed: 9175705). Acts as a regulator of cell migration, independently of its role as protease inhibitor (PubMed: 15001579 , PubMed: 9168821). It is required for stimulation of keratinocyte migration during cutaneous injury repair (PubMed: 18386027). It is involved in cellular and replicative senescence (PubMed: 16862142). Plays a role in alveolar type 2 cells senescence in the lung (By similarity). Is involved in the regulation of cementogenic differentiation of periodontal ligament

stem cells, and regulates odontoblast differentiation and dentin formation during odontogenesis (PubMed:[25808697](#), PubMed:[27046084](#)).

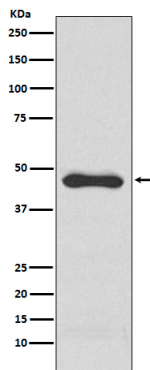
Cellular Location

Secreted.

Tissue Location

Expressed in endothelial cells (PubMed:2430793, PubMed:3097076). Found in plasma, platelets, and hepatoma and fibrosarcoma cells.

Images



Western blot analysis of PAI1 expression in HepG2 cell lysate.

Please note: All products are 'FOR RESEARCH USE ONLY. NOT FOR USE IN DIAGNOSTIC OR THERAPEUTIC PROCEDURES'.