

Apg12(Atg12) Antibody

Rabbit mAb

Catalog # AP91338

Product Information

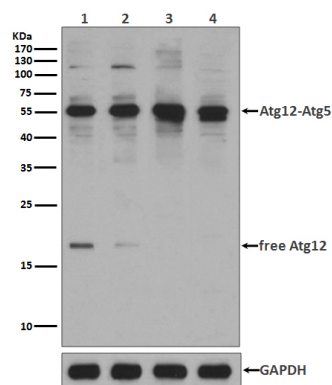
Application	WB, IHC, IF, FC, ICC, IP, IHF
Primary Accession	O94817
Reactivity	Human
Clonality	Monoclonal
Other Names	APG12-like; APG12L; ATG12; Autophagy 12; Autophagy-related protein 12; FBR93; HAPG12; Ubiquitin-like protein ATG12;
Isotype	Rabbit IgG
Host	Rabbit
Calculated MW	15113

Additional Information

Dilution	WB 1:500~1:2000 IHC 1:50~1:200 ICC/IF 1:50~1:200 IP 1:50 FC 1:100
Purification	Affinity-chromatography
Immunogen	A synthesized peptide derived from human Apg12(Atg12)
Description	Ubiquitin-like protein required for autophagy. Conjugated to ATG3 and ATG5.
Storage Condition and Buffer	Rabbit IgG in phosphate buffered saline , pH 7.4, 150mM NaCl, 0.02% sodium azide and 50% glycerol. Store at +4°C short term. Store at -20°C long term. Avoid freeze / thaw cycle.

Protein Information

Name	ATG12 (HGNC:588)
Synonyms	APG12, APG12L
Function	Ubiquitin-like protein involved in autophagy vesicles formation. Conjugation with ATG5 through a ubiquitin-like conjugating system involving also ATG7 as an E1-like activating enzyme and ATG10 as an E2-like conjugating enzyme, is essential for its function. The ATG12-ATG5 conjugate acts as an E3-like enzyme which is required for lipidation of ATG8 family proteins and their association to the vesicle membranes. As part of the ATG8 conjugation system with ATG5 and ATG16L1, required for recruitment of LRRK2 to stressed lysosomes and induction of LRRK2 kinase activity in response to lysosomal stress (By similarity).
Cellular Location	Cytoplasm. Preautophagosomal structure membrane; Peripheral membrane protein. Note=TECPR1 recruits the ATG12- ATG5 conjugate to the autolysosomal membrane
Tissue Location	Ubiquitous..



Western blot analysis of Apg12(Atg12) expression in 293 cell lysate.

Image not found : 202311/AP91338-wb6.jpg

Pyrroloquinoline quinine ameliorates doxorubicin-induced autophagy-dependent apoptosis via lysosomal-mitochondrial axis in vascular endothelial cells. -Toxicology

Please note: All products are 'FOR RESEARCH USE ONLY. NOT FOR USE IN DIAGNOSTIC OR THERAPEUTIC PROCEDURES'.