

# TNF beta Antibody

Rabbit mAb

Catalog # AP91342

## Product Information

<b>Application</b>	WB
<b>Primary Accession</b>	<a href="#">P01374</a>
<b>Reactivity</b>	Human
<b>Clonality</b>	Monoclonal
<b>Other Names</b>	LTalpha; DIF; LT alpha; Lta; Lymphotoxin alpha; TNF B; TNF superfamily member 1; TNF-beta; TNFB; TNFbeta; TNFSF1; TNLG1E;
<b>Isotype</b>	Rabbit IgG
<b>Host</b>	Rabbit
<b>Calculated MW</b>	22297

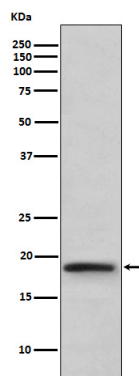
## Additional Information

<b>Dilution</b>	WB 1:500~1:2000
<b>Purification</b>	Affinity-chromatography
<b>Immunogen</b>	A synthesized peptide derived from human TNF beta
<b>Description</b>	Cytokine that in its homotrimeric form binds to TNFRSF1A/TNFR1, TNFRSF1B/TNFR and TNFRSF14/HVEM. In its heterotrimeric form with LTB binds to TNFRSF3/LTBR. Lymphotoxin is produced by lymphocytes and cytotoxic for a wide range of tumor cells in vitro and in vivo.
<b>Storage Condition and Buffer</b>	Rabbit IgG in phosphate buffered saline , pH 7.4, 150mM NaCl, 0.02% sodium azide and 50% glycerol. Store at +4°C short term. Store at -20°C long term. Avoid freeze / thaw cycle.

## Protein Information

<b>Name</b>	LTA
<b>Synonyms</b>	TNFB, TNFSF1
<b>Function</b>	Cytokine that in its homotrimeric form binds to TNFRSF1A/TNFR1, TNFRSF1B/TNFR and TNFRSF14/HVEM (PubMed: <a href="#">9462508</a> ). In its heterotrimeric form with LTB binds to TNFRSF3/LTBR (PubMed: <a href="#">24248355</a> ). Lymphotoxin is produced by lymphocytes and is cytotoxic for a wide range of tumor cells in vitro and in vivo.
<b>Cellular Location</b>	Secreted. Membrane. Note=The homotrimer is secreted. The heterotrimer is membrane-associated

## Images



Western blot analysis of TNF beta expression in TNF beta recombinant protein.

Please note: All products are 'FOR RESEARCH USE ONLY. NOT FOR USE IN DIAGNOSTIC OR THERAPEUTIC PROCEDURES'.