

LMO2 Antibody

Rabbit mAb

Catalog # AP91349

Product Information

Application	WB, FC, IP
Primary Accession	P25791
Reactivity	Rat, Human, Mouse
Clonality	Monoclonal
Other Names	Cysteine rich protein TTG 2; LIM domain only 2 (rhombotin like 1); lmo2; RBTN 2; RBTNL1; RHOM 2; Rhombotin 2; TTG 2;
Isotype	Rabbit IgG
Host	Rabbit
Calculated MW	18358

Additional Information

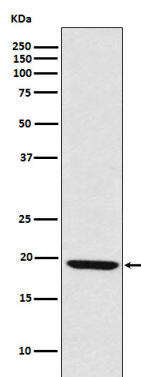
Dilution	WB 1:500~1:2000 IP 1:100 FC 1:100
Purification	Affinity-chromatography
Immunogen	A synthesized peptide derived from human LMO2
Description	Acts with TAL1/SCL to regulate red blood cell development. Also acts with LDB1 to maintain erythroid precursors in an immature state.
Storage Condition and Buffer	Rabbit IgG in phosphate buffered saline , pH 7.4, 150mM NaCl, 0.02% sodium azide and 50% glycerol. Store at +4°C short term. Store at -20°C long term. Avoid freeze / thaw cycle.

Protein Information

Name	LMO2
Synonyms	RBTN2, RBTNL1, RHOM2, TTG2
Function	Acts with TAL1/SCL to regulate red blood cell development. Also acts with LDB1 to maintain erythroid precursors in an immature state.
Cellular Location	Nucleus.

Images

Western blot analysis of LMO2 expression in Raji cell lysate.



Please note: All products are 'FOR RESEARCH USE ONLY. NOT FOR USE IN DIAGNOSTIC OR THERAPEUTIC PROCEDURES'.