

MTA2 Antibody

Rabbit mAb

Catalog # AP91355

Product Information

Application	WB, IHC, IF, FC, ICC, IHF
Primary Accession	O94776
Reactivity	Human
Clonality	Monoclonal
Other Names	Mata1l1; Metastasis associated gene 1 like 1; Metastasis associated gene family member 2; Mmta2; MTA1L1; p53 target protein in deacetylase complex; PID;
Isotype	Rabbit IgG
Host	Rabbit
Calculated MW	75023

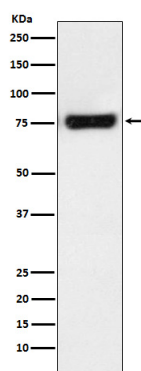
Additional Information

Dilution	WB 1:500~1:2000 IHC 1:50~1:200 ICC/IF 1:50~1:200 FC 1:100
Purification	Affinity-chromatography
Immunogen	A synthesized peptide derived from human MTA2
Description	The p53 tumor suppressor gene integrates numerous signals that control cell life and death. There are several proteins that are involved in the p53 pathway, including Chk2, p53R2, p53AIP1, Noxa, PIDD, and MTA2. The transcriptional activity of p53 is modulated by protein stability and acetylation.
Storage Condition and Buffer	Rabbit IgG in phosphate buffered saline , pH 7.4, 150mM NaCl, 0.02% sodium azide and 50% glycerol. Store at +4°C short term. Store at -20°C long term. Avoid freeze / thaw cycle.

Protein Information

Name	MTA2
Synonyms	MTA1L1, PID
Function	May function as a transcriptional coregulator (PubMed: 16428440 , PubMed: 28977666). Acts as a component of the histone deacetylase NuRD complex which participates in the remodeling of chromatin (PubMed: 16428440 , PubMed: 28977666).
Cellular Location	Nucleus {ECO:0000255 PROSITE-ProRule:PRU00512, ECO:0000255 PROSITE-ProRule:PRU00624, ECO:0000269 PubMed:28977666, ECO:0000269 PubMed:33283408}
Tissue Location	Widely expressed.

Images



Western blot analysis of MTA2 expression in HeLa cell lysate.

Please note: All products are 'FOR RESEARCH USE ONLY. NOT FOR USE IN DIAGNOSTIC OR THERAPEUTIC PROCEDURES'.