

Citrate synthetase Antibody

Rabbit mAb

Catalog # AP91360

Product Information

Application	WB, IHC, IF, FC, ICC, IHF
Primary Accession	O75390
Reactivity	Rat, Human, Mouse
Clonality	Monoclonal
Other Names	Citrate synthase; Citrate synthase, mitochondrial; Cs;
Isotype	Rabbit IgG
Host	Rabbit
Calculated MW	51712

Additional Information

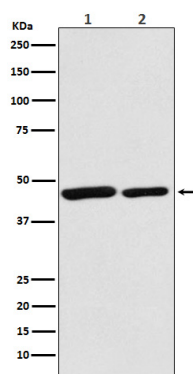
Dilution	WB 1:500~1:2000 IHC 1:50~1:200 ICC/IF 1:50~1:200 FC 1:50
Purification	Affinity-chromatography
Immunogen	A synthesized peptide derived from human Citrate synthetase
Description	Carbohydrate metabolism; tricarboxylic acid cycle; isocitrate from oxaloacetate: step 1/2.
Storage Condition and Buffer	Rabbit IgG in phosphate buffered saline , pH 7.4, 150mM NaCl, 0.02% sodium azide and 50% glycerol. Store at +4°C short term. Store at -20°C long term. Avoid freeze / thaw cycle.

Protein Information

Name	CS
Function	Key enzyme of the Krebs tricarboxylic acid cycle which catalyzes the synthesis of citrate from acetyl coenzyme A and oxaloacetate.
Cellular Location	Mitochondrion matrix {ECO:0000250 UniProtKB:P00889}

Images

Western blot analysis of Citrate synthetase expression in
(1) HeLa cell lysate; (1) Mouse spleen lysate.



Please note: All products are 'FOR RESEARCH USE ONLY. NOT FOR USE IN DIAGNOSTIC OR THERAPEUTIC PROCEDURES'.