

# Staufen Antibody

Rabbit mAb

Catalog # AP91364

## Product Information

---

<b>Application</b>	WB, IF, FC, ICC
<b>Primary Accession</b>	<a href="#">O95793</a>
<b>Reactivity</b>	Rat, Human, Mouse
<b>Clonality</b>	Monoclonal
<b>Other Names</b>	Double-stranded RNA-binding protein Staufen homolog 1; PPP1R150; STAU; staufen; Staufen RNA binding protein (Drosophila); Staufen, Drosophila, homolog of, 1;
<b>Isotype</b>	Rabbit IgG
<b>Host</b>	Rabbit
<b>Calculated MW</b>	63182

## Additional Information

---

<b>Dilution</b>	WB 1:500~1:2000 ICC/IF 1:50~1:200 FC 1:500
<b>Purification</b>	Affinity-chromatography
<b>Immunogen</b>	A synthesized peptide derived from human Staufen
<b>Description</b>	Binds double-stranded RNA (regardless of the sequence) and tubulin. May play a role in specific positioning of mRNAs at given sites in the cell by cross-linking cytoskeletal and RNA components, and in stimulating their translation at the site.
<b>Storage Condition and Buffer</b>	Rabbit IgG in phosphate buffered saline , pH 7.4, 150mM NaCl, 0.02% sodium azide and 50% glycerol. Store at +4°C short term. Store at -20°C long term. Avoid freeze / thaw cycle.

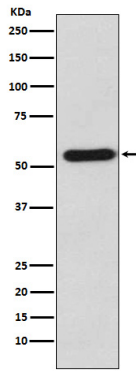
## Protein Information

---

<b>Name</b>	STAU1
<b>Synonyms</b>	STAU
<b>Function</b>	Binds double-stranded RNA (regardless of the sequence) and tubulin. May play a role in specific positioning of mRNAs at given sites in the cell by cross-linking cytoskeletal and RNA components, and in stimulating their translation at the site.
<b>Cellular Location</b>	Cytoplasm. Rough endoplasmic reticulum. Note=Localizes exclusively with the rough endoplasmic reticulum (RER)
<b>Tissue Location</b>	Widely expressed. Expressed in brain, pancreas, heart, skeletal muscles, liver, lung, kidney and placenta

## Images

---



Western blot analysis of Staufen expression in K562 cell lysate.

Please note: All products are 'FOR RESEARCH USE ONLY. NOT FOR USE IN DIAGNOSTIC OR THERAPEUTIC PROCEDURES'.