

p23 Antibody

Rabbit mAb

Catalog # AP91369

Product Information

Application	WB, IF, ICC, IP
Primary Accession	Q15185
Reactivity	Rat, Human, Mouse
Clonality	Monoclonal
Other Names	cPGES; Cytosolic prostaglandin E synthase; Hsp90 co chaperone; P23; Sid 3177; TEBP;
Isotype	Rabbit IgG
Host	Rabbit
Calculated MW	18697

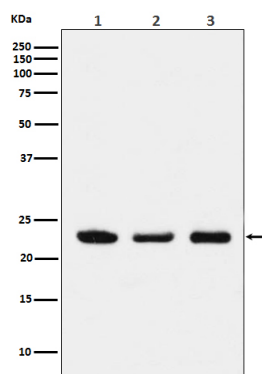
Additional Information

Dilution	WB 1:1000~1:5000 ICC/IF 1:50~1:200 IP 1:50
Purification	Affinity-chromatography
Immunogen	A synthesized peptide derived from human p23
Description	Molecular chaperone that localizes to genomic response elements in a hormone-dependent manner and disrupts receptor-mediated transcriptional activation, by promoting disassembly of transcriptional regulatory complexes.
Storage Condition and Buffer	Rabbit IgG in phosphate buffered saline , pH 7.4, 150mM NaCl, 0.02% sodium azide and 50% glycerol. Store at +4°C short term. Store at -20°C long term. Avoid freeze / thaw cycle.

Protein Information

Name	PTGES3
Synonyms	P23, TEBP
Function	Cytosolic prostaglandin synthase that catalyzes the oxidoreduction of prostaglandin endoperoxide H2 (PGH2) to prostaglandin E2 (PGE2) (PubMed: 10922363). Molecular chaperone that localizes to genomic response elements in a hormone-dependent manner and disrupts receptor-mediated transcriptional activation, by promoting disassembly of transcriptional regulatory complexes (PubMed: 11274138 , PubMed: 12077419). Facilitates HIF alpha proteins hydroxylation via interaction with EGLN1/PHD2, leading to recruit EGLN1/PHD2 to the HSP90 pathway (PubMed: 24711448).
Cellular Location	Cytoplasm {ECO:0000250 UniProtKB:Q3ZBF7}.

Images



Western blot analysis of p23 expression in (1) HeLa cell lysate; (2) NIH/3T3 cell lysate; (3) PC12 cell lysate.

Please note: All products are 'FOR RESEARCH USE ONLY. NOT FOR USE IN DIAGNOSTIC OR THERAPEUTIC PROCEDURES'.