

Alpha Fodrin Antibody

Rabbit mAb

Catalog # AP91370

Product Information

Application	WB, IHC, IP
Primary Accession	Q13813
Reactivity	Rat, Human, Mouse
Clonality	Monoclonal
Other Names	Alpha II Spectrin; EIEE5; Fodrin alpha chain; NEAS; SPECA; Spectrin; Spna2; SPTAN1;
Isotype	Rabbit IgG
Host	Rabbit
Calculated MW	284539

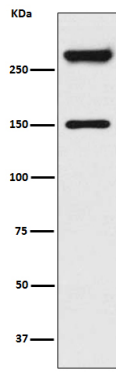
Additional Information

Dilution	WB 1:1000~1:5000 IHC 1:50~1:200 IP 1:10
Purification	Affinity-chromatography
Immunogen	A synthesized peptide derived from human Alpha Fodrin
Description	Fodrin (also named nonerythroid spectrin) is a universally expressed membrane-associated cytoskeletal protein consisting of alpha- and beta-subunits (1). This protein is important for maintaining normal membrane structure and supporting cell surface protein function (1). Alpha-fodrin is one of the primary targets cleaved by caspases during apoptosis.
Storage Condition and Buffer	Rabbit IgG in phosphate buffered saline , pH 7.4, 150mM NaCl, 0.02% sodium azide and 50% glycerol. Store at +4°C short term. Store at -20°C long term. Avoid freeze / thaw cycle.

Protein Information

Name	SPTAN1
Synonyms	NEAS, SPTA2
Function	Fodrin, which seems to be involved in secretion, interacts with calmodulin in a calcium-dependent manner and is thus candidate for the calcium-dependent movement of the cytoskeleton at the membrane.
Cellular Location	Cytoplasm, cytoskeleton. Cytoplasm, cell cortex. Note=Expressed along the cell membrane in podocytes and presumptive tubule cells during glomerulogenesis and is expressed along lateral cell margins in tubule cells.

Images



Western blot analysis of Alpha Fodrin expression in HeLa cell lysate treated with Camptothecin.

Please note: All products are 'FOR RESEARCH USE ONLY. NOT FOR USE IN DIAGNOSTIC OR THERAPEUTIC PROCEDURES'.