

CD39 Antibody

Rabbit mAb

Catalog # AP91374

Product Information

Application	WB
Primary Accession	P49961
Reactivity	Rat, Human, Mouse
Clonality	Monoclonal
Other Names	ATPDase; CD39; Ecto apyrase; Ecto ATP diphosphohydrolas; Ecto-apyrase; Ecto-ATPDase 1; ENTPD1; Lymphoid cell activation antigen; NTPDase1; SPG64;
Isotype	Rabbit IgG
Host	Rabbit
Calculated MW	57965

Additional Information

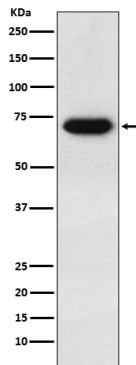
Dilution	WB 1:500~1:2000
Purification	Affinity-chromatography
Immunogen	A synthesized peptide derived from human CD39
Description	In the nervous system, could hydrolyze ATP and other nucleotides to regulate purinergic neurotransmission. Could also be implicated in the prevention of platelet aggregation. Hydrolyzes ATP and ADP equally well.
Storage Condition and Buffer	Rabbit IgG in phosphate buffered saline , pH 7.4, 150mM NaCl, 0.02% sodium azide and 50% glycerol. Store at +4°C short term. Store at -20°C long term. Avoid freeze / thaw cycle.

Protein Information

Name	ENTPD1 (HGNC:3363)
Function	Catalyzes the hydrolysis of nucleoside triphosphates (NTPs) and diphosphates (NDPs) (Probable) (PubMed: 8529670 , PubMed: 8626624 , PubMed: 8955160 , PubMed: 8996251). The enzyme sequentially removes phosphate groups in two successive steps, converting NTPs to nucleoside monophosphates (NMPs) via NDP intermediates (Probable) (PubMed: 8529670 , PubMed: 8626624 , PubMed: 8955160 , PubMed: 8996251). This activity contributes to the regulation of extracellular levels of nucleotides (Probable) (PubMed: 8529670 , PubMed: 8626624 , PubMed: 8955160 , PubMed: 8996251). By hydrolyzing proinflammatory ATP and platelet-activating ADP to AMP, it blocks platelet aggregation and supports blood flow (PubMed: 8955160 , PubMed: 8996251).
Cellular Location	Membrane; Multi-pass membrane protein. Membrane, caveola
Tissue Location	Expressed primarily on activated lymphoid cells (PubMed:7930580). Also

expressed in endothelial tissues (PubMed:8955160). Highly expressed in placenta, lung, skeletal muscle, kidney (PubMed:8955160).

Images



Western blot analysis of CD39 expression in human placenta lysate.

Please note: All products are 'FOR RESEARCH USE ONLY. NOT FOR USE IN DIAGNOSTIC OR THERAPEUTIC PROCEDURES'.