

Menin Antibody

Rabbit mAb

Catalog # AP91375

Product Information

Application	WB, IHC, IF, ICC, IP, IHF
Primary Accession	O00255
Reactivity	Human
Clonality	Monoclonal
Other Names	MEA1; Men1; Menin; Multiple Endocrine Adenomatosis 1; Multiple Endocrine Neoplasia 1; SCG2; Suppressor Candidate Gene 2; Wermer syndrome; ZES;
Isotype	Rabbit IgG
Host	Rabbit
Calculated MW	67497

Additional Information

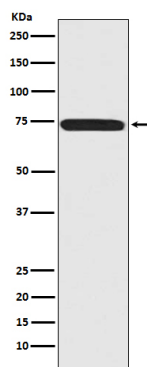
Dilution	WB 1:1000~1:5000 IHC 1:50~1:200 ICC/IF 1:50~1:200 IP 1:50
Purification	Affinity-chromatography
Immunogen	A synthesized peptide derived from human Menin
Description	Menin, the protein product of the MEN1 gene, is a component of the mixed-lineage leukemia protein (MLL)-containing histone methyltransferase complex that facilitates methylation of histone H3 Lys4 to promote transcriptional activation. Menin functions to suppress proliferation of pancreatic islet cells, at least in part through MLL-mediated activation of the p18INK4c (p18) and p27CIP/KIP (p27) cyclin-dependent kinase inhibitor genes.
Storage Condition and Buffer	Rabbit IgG in phosphate buffered saline , pH 7.4, 150mM NaCl, 0.02% sodium azide and 50% glycerol. Store at +4°C short term. Store at -20°C long term. Avoid freeze / thaw cycle.

Protein Information

Name	MEN1
Synonyms	SCG2
Function	Essential component of a MLL/SET1 histone methyltransferase (HMT) complex, a complex that specifically methylates 'Lys-4' of histone H3 (H3K4). Functions as a transcriptional regulator. Binds to the TERT promoter and represses telomerase expression. Plays a role in TGFB1-mediated inhibition of cell-proliferation, possibly regulating SMAD3 transcriptional activity. Represses JUND-mediated transcriptional activation on AP1 sites, as well as that mediated by NFkB subunit RELA. Positively regulates HOXC8 and HOXC6 gene expression. May be involved in normal hematopoiesis through the activation of HOXA9 expression (By similarity). May be involved in DNA repair.

Cellular Location	Nucleus. Note=Concentrated in nuclear body-like structures. Relocates to the nuclear matrix upon gamma irradiation
Tissue Location	Ubiquitous.

Images



Western blot analysis of Menin expression in 293T cell lysate.

Please note: All products are 'FOR RESEARCH USE ONLY. NOT FOR USE IN DIAGNOSTIC OR THERAPEUTIC PROCEDURES'.