

# CHD3 Antibody

Rabbit mAb

Catalog # AP91378

## Product Information

<b>Application</b>	WB, IHC, IF, FC, ICC, IHF
<b>Primary Accession</b>	<a href="#">Q12873</a>
<b>Reactivity</b>	Rat, Human, Mouse
<b>Clonality</b>	Monoclonal
<b>Other Names</b>	CHD-3; Chd3; Chd7; hZFH; Mi2 ALPHA; Prp7; ZFH; Zinc finger helicase;
<b>Isotype</b>	Rabbit IgG
<b>Host</b>	Rabbit
<b>Calculated MW</b>	226592

## Additional Information

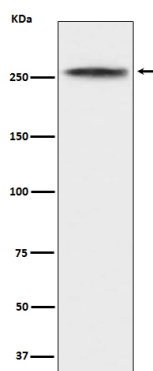
<b>Dilution</b>	WB 1:500~1:2000 IHC 1:50~1:200 ICC/IF 1:50~1:200 FC 1:50
<b>Purification</b>	Affinity-chromatography
<b>Immunogen</b>	A synthesized peptide derived from human CHD3
<b>Description</b>	Component of the histone deacetylase NuRD complex which participates in the remodeling of chromatin by deacetylating histones. Required for anchoring centrosomal pericentrin in both interphase and mitosis, for spindle organization and centrosome integrity.
<b>Storage Condition and Buffer</b>	Rabbit IgG in phosphate buffered saline , pH 7.4, 150mM NaCl, 0.02% sodium azide and 50% glycerol. Store at +4°C short term. Store at -20°C long term. Avoid freeze / thaw cycle.

## Protein Information

<b>Name</b>	CHD3
<b>Function</b>	ATP-dependent chromatin-remodeling factor that binds and distorts nucleosomal DNA (PubMed: <a href="#">28977666</a> ). Acts as a component of the histone deacetylase NuRD complex which participates in the remodeling of chromatin (PubMed: <a href="#">16428440</a> , PubMed: <a href="#">28977666</a> , PubMed: <a href="#">30397230</a> , PubMed: <a href="#">9804427</a> ). Involved in transcriptional repression as part of the NuRD complex (PubMed: <a href="#">27068747</a> ). Required for anchoring centrosomal pericentrin in both interphase and mitosis, for spindle organization and centrosome integrity (PubMed: <a href="#">17626165</a> ).
<b>Cellular Location</b>	Nucleus, PML body. Nucleus. Cytoplasm, cytoskeleton, microtubule organizing center, centrosome Note=Associates with centrosomes in interphase and mitosis (PubMed: <a href="#">17626165</a> ). Localizes to sites of DNA damage (PubMed: <a href="#">28977666</a> )
<b>Tissue Location</b>	Widely expressed.

## Images

---



Western blot analysis of CHD3 expression in K562 cell lysate.

Please note: All products are 'FOR RESEARCH USE ONLY. NOT FOR USE IN DIAGNOSTIC OR THERAPEUTIC PROCEDURES'.