

APOC3 Antibody

Rabbit mAb

Catalog # AP91379

Product Information

Application	WB, IHC
Primary Accession	P02656
Reactivity	Human
Clonality	Monoclonal
Other Names	APOC3; APO C3; Apo CIII; ApoC III; APOC3; ApoCIII; Apolipoprotein C III; Apolipoprotein C3;
Isotype	Rabbit IgG
Host	Rabbit
Calculated MW	10852

Additional Information

Dilution	WB 1:500~1:2000 IHC 1:50~1:200
Purification	Affinity-chromatography
Immunogen	A synthesized peptide derived from human APOC3
Description	Inhibits lipoprotein lipase and hepatic lipase and decreases the uptake of lymph chylomicrons by hepatic cells. This suggests that it delays the catabolism of triglyceride-rich particles.
Storage Condition and Buffer	Rabbit IgG in phosphate buffered saline , pH 7.4, 150mM NaCl, 0.02% sodium azide and 50% glycerol. Store at +4°C short term. Store at -20°C long term. Avoid freeze / thaw cycle.

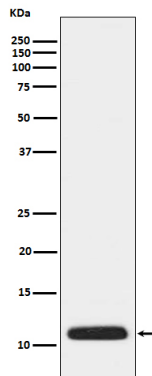
Protein Information

Name	APOC3
Function	Component of triglyceride-rich very low density lipoproteins (VLDL) and high density lipoproteins (HDL) in plasma (PubMed: 18201179 , PubMed: 22510806). Plays a multifaceted role in triglyceride homeostasis (PubMed: 18201179 , PubMed: 22510806). Intracellularly, promotes hepatic very low density lipoprotein 1 (VLDL1) assembly and secretion; extracellularly, attenuates hydrolysis and clearance of triglyceride- rich lipoproteins (TRLs) (PubMed: 18201179 , PubMed: 22510806). Impairs the lipolysis of TRLs by inhibiting lipoprotein lipase and the hepatic uptake of TRLs by remnant receptors (PubMed: 18201179 , PubMed: 22510806). Formed of several curved helices connected via semiflexible hinges, so that it can wrap tightly around the curved micelle surface and easily adapt to the different diameters of its natural binding partners (PubMed: 18408013).
Cellular Location	Secreted

Tissue Location

Liver..

Images



Western blot analysis of APOC3 expression in human plasma lysate.

Please note: All products are 'FOR RESEARCH USE ONLY. NOT FOR USE IN DIAGNOSTIC OR THERAPEUTIC PROCEDURES'.