

CEACAM6 Antibody

Rabbit mAb

Catalog # AP91381

Product Information

| | |
|--------------------------|--|
| Application | WB, IHC, IF, ICC, IP, IHF |
| Primary Accession | P40199 |
| Reactivity | Rat, Human, Mouse |
| Clonality | Monoclonal |
| Other Names | CD66c; CEACAM6; CEAL; NCA; Non specific cross reacting antigen; Normal cross reacting antigen; |
| Isotype | Rabbit IgG |
| Host | Rabbit |
| Calculated MW | 37237 |

Additional Information

| | |
|-------------------------------------|---|
| Dilution | WB 1:1000~1:5000 IHC 1:50~1:200 ICC/IF 1:50~1:200 IP 1:50 |
| Purification | Affinity-chromatography |
| Immunogen | A synthesized peptide derived from human CEACAM6 |
| Description | Mediate homotypic and heterotypic intercellular adhesion events independently of cell type . |
| Storage Condition and Buffer | Rabbit IgG in phosphate buffered saline , pH 7.4, 150mM NaCl, 0.02% sodium azide and 50% glycerol. Store at +4°C short term. Store at -20°C long term. Avoid freeze / thaw cycle. |

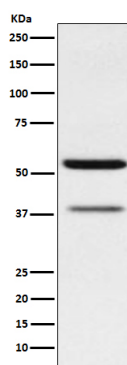
Protein Information

| | |
|--------------------------|--|
| Name | CEACAM6 (HGNC:1818) |
| Function | Cell surface glycoprotein that plays a role in cell adhesion and tumor progression (PubMed: 10910050 , PubMed: 11590190 , PubMed: 1378450 , PubMed: 16204051 , PubMed: 2022629 , PubMed: 2803308 , PubMed: 8776764). Intercellular adhesion occurs in a calcium- and fibronectin-independent manner (PubMed: 16204051 , PubMed: 2022629). Mediates homophilic and heterophilic cell adhesion with other carcinoembryonic antigen-related cell adhesion molecules, such as CEACAM5 and CEACAM8 (PubMed: 11590190 , PubMed: 16204051 , PubMed: 2022629 , PubMed: 2803308 , PubMed: 8776764). Heterophilic interaction with CEACAM8 occurs in activated neutrophils (PubMed: 8776764). Plays a role in neutrophil adhesion to cytokine-activated endothelial cells (PubMed: 1378450). Plays a role in cell migration and cell adhesion to endothelial cells (PubMed: 16204051). |
| Cellular Location | Cell membrane; Lipid-anchor, GPI-anchor. Apical cell membrane. Cell surface. Note=Localized to the apical glycocalyx surface. |

Tissue Location

Expressed in neutrophils (PubMed:1378450). Expressed in columnar epithelial and goblet cells of the colon (PubMed:10436421). Expressed in numerous tumor cell lines (at protein level) (PubMed:16204051).

Images



Western blot analysis of CEACAM6 expression in MCF7 cell lysate.

Please note: All products are 'FOR RESEARCH USE ONLY. NOT FOR USE IN DIAGNOSTIC OR THERAPEUTIC PROCEDURES'.