

# DAZL Antibody

Rabbit mAb

Catalog # AP91384

## Product Information

---

<b>Application</b>	WB
<b>Primary Accession</b>	<a href="#">Q92904</a>
<b>Reactivity</b>	Human
<b>Clonality</b>	Monoclonal
<b>Other Names</b>	DAZ homolog; DAZ like autosomal; DAZH; DAZL; DAZL1; DAZLA; Deleted in azoospermia like 1; Germline specific RNA binding protein; SPGY like autosomal; SPGYLA; Tpx2;
<b>Isotype</b>	Rabbit IgG
<b>Host</b>	Rabbit
<b>Calculated MW</b>	33178

## Additional Information

---

<b>Dilution</b>	WB 1:500~1:2000
<b>Purification</b>	Affinity-chromatography
<b>Immunogen</b>	A synthesized peptide derived from human DAZL
<b>Description</b>	RNA-binding protein, which is essential for gametogenesis. Plays a central role during spermatogenesis. May act by binding to the 3'-UTR of mRNA and thereby regulating the translation of key transcripts.
<b>Storage Condition and Buffer</b>	Rabbit IgG in phosphate buffered saline , pH 7.4, 150mM NaCl, 0.02% sodium azide and 50% glycerol. Store at +4°C short term. Store at -20°C long term. Avoid freeze / thaw cycle.

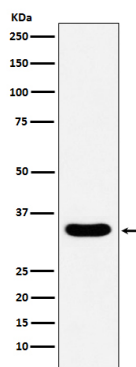
## Protein Information

---

<b>Name</b>	DAZL
<b>Synonyms</b>	DAZH, DAZL1, DAZLA, SPGYLA
<b>Function</b>	RNA-binding protein, which is essential for gametogenesis in both males and females. Plays a central role during spermatogenesis. Acts by binding to the 3'-UTR of mRNA, specifically recognizing GUU triplets, and thereby regulating the translation of key transcripts (By similarity).
<b>Cellular Location</b>	Cytoplasm. Nucleus. Note=Predominantly cytoplasmic. Nuclear in spermatogonia until near the end of the meiotic prophase and cytoplasmic localization from then onward.
<b>Tissue Location</b>	Testis specific.

## Images

---



Western blot analysis of DAZL expression in human testis lysate.

Please note: All products are 'FOR RESEARCH USE ONLY. NOT FOR USE IN DIAGNOSTIC OR THERAPEUTIC PROCEDURES'.