

HEC1 Antibody

Rabbit mAb

Catalog # AP91388

Product Information

Application	WB, IP
Primary Accession	O14777
Reactivity	Rat, Human, Mouse
Clonality	Monoclonal
Other Names	HEC; HsHec1; hsNDC80; Kinetochore protein Hec1; Kinetochore-associated protein 2; KNTC2; ndc80; TID3;
Isotype	Rabbit IgG
Host	Rabbit
Calculated MW	73913

Additional Information

Dilution	WB 1:1000~1:5000 IP 1:50
Purification	Affinity-chromatography
Immunogen	A synthesized peptide derived from human HEC1
Description	Acts as a component of the essential kinetochore-associated NDC80 complex, which is required for chromosome segregation and spindle checkpoint activity. Required for kinetochore integrity and the organization of stable microtubule binding sites in the outer plate of the kinetochore.
Storage Condition and Buffer	Rabbit IgG in phosphate buffered saline , pH 7.4, 150mM NaCl, 0.02% sodium azide and 50% glycerol. Store at +4°C short term. Store at -20°C long term. Avoid freeze / thaw cycle.

Protein Information

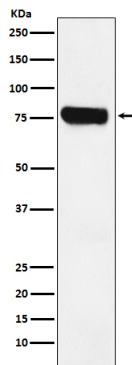
Name	NDC80
Synonyms	HEC, HEC1, KNTC2
Function	Acts as a component of the essential kinetochore-associated NDC80 complex, which is required for chromosome segregation and spindle checkpoint activity (PubMed: 12351790 , PubMed: 14654001 , PubMed: 14699129 , PubMed: 15062103 , PubMed: 15235793 , PubMed: 15239953 , PubMed: 15548592 , PubMed: 16732327 , PubMed: 30409912 , PubMed: 9315664). Required for kinetochore integrity and the organization of stable microtubule binding sites in the outer plate of the kinetochore (PubMed: 15548592 , PubMed: 30409912). The NDC80 complex synergistically enhances the affinity of the SKA1 complex for microtubules and may allow the NDC80 complex to track depolymerizing microtubules (PubMed: 23085020). Plays a role in chromosome congression and is essential for the end-on attachment of the kinetochores to spindle microtubules

(PubMed:[23891108](#), PubMed:[25743205](#)).

Cellular Location

Nucleus. Chromosome, centromere, kinetochore. Note=Localizes to kinetochores from late prophase to anaphase (PubMed:14699129) Localizes specifically to the outer plate of the kinetochore (PubMed:14699129).

Images



Western blot analysis of HEC1 expression in Jurkat cell lysate.

Please note: All products are 'FOR RESEARCH USE ONLY. NOT FOR USE IN DIAGNOSTIC OR THERAPEUTIC PROCEDURES'.