

## CIRBP Antibody (C-term)

Affinity Purified Rabbit Polyclonal Antibody (Pab)

Catalog # AP9139b

### Product Information

---

<b>Application</b>	WB, IHC-P, E
<b>Primary Accession</b>	<a href="#">Q14011</a>
<b>Other Accession</b>	<a href="#">P60825</a> , <a href="#">P60824</a> , <a href="#">P60826</a>
<b>Reactivity</b>	Human
<b>Predicted</b>	Hamster, Mouse, Rat
<b>Host</b>	Rabbit
<b>Clonality</b>	Polyclonal
<b>Isotype</b>	Rabbit IgG
<b>Clone Names</b>	RB23135
<b>Calculated MW</b>	18648
<b>Antigen Region</b>	145-172

### Additional Information

---

<b>Gene ID</b>	1153
<b>Other Names</b>	Cold-inducible RNA-binding protein, A18 hnRNP, Glycine-rich RNA-binding protein CIRP, CIRBP, A18HNRNP, CIRP
<b>Target/Specificity</b>	This CIRBP antibody is generated from rabbits immunized with a KLH conjugated synthetic peptide between 145-172 amino acids from the C-terminal region of human CIRBP.
<b>Dilution</b>	WB~~1:1000 IHC-P~~1:100~500 E~~Use at an assay dependent concentration.
<b>Format</b>	Purified polyclonal antibody supplied in PBS with 0.09% (W/V) sodium azide. This antibody is purified through a protein A column, followed by peptide affinity purification.
<b>Storage</b>	Maintain refrigerated at 2-8°C for up to 2 weeks. For long term storage store at -20°C in small aliquots to prevent freeze-thaw cycles.
<b>Precautions</b>	CIRBP Antibody (C-term) is for research use only and not for use in diagnostic or therapeutic procedures.

### Protein Information

---

<b>Name</b>	CIRBP
<b>Synonyms</b>	A18HNRNP, CIRP

<b>Function</b>	Cold-inducible mRNA binding protein that plays a protective role in the genotoxic stress response by stabilizing transcripts of genes involved in cell survival. Acts as a translational activator. Seems to play an essential role in cold-induced suppression of cell proliferation. Binds specifically to the 3'-untranslated regions (3'-UTRs) of stress-responsive transcripts RPA2 and TXN. Acts as a translational repressor (By similarity). Promotes assembly of stress granules (SGs), when overexpressed.
<b>Cellular Location</b>	Nucleus, nucleoplasm. Cytoplasm Note=Translocates from the nucleus to the cytoplasm after exposure to UV radiation. Translocates from the nucleus to the cytoplasm into stress granules upon various cytoplasmic stresses, such as osmotic and heat shocks. Its recruitment into stress granules occurs in the absence of TIAR proteins (By similarity).
<b>Tissue Location</b>	Ubiquitous.

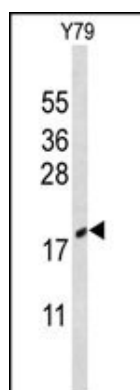
## Background

CIRBP is cold-inducible mRNA binding protein that plays a protective role in the genotoxic stress response by stabilizing transcripts of genes involved in cell survival. It acts as a translational activator and seems to play an essential role in cold-induced suppression of cell proliferation. It binds specifically to the 3'-untranslated regions (3'-UTRs) of stress-responsive transcripts RPA2 and TXN. This protein acts as a translational repressor (By similarity) and promotes assembly of stress granules (SGs), when overexpressed.

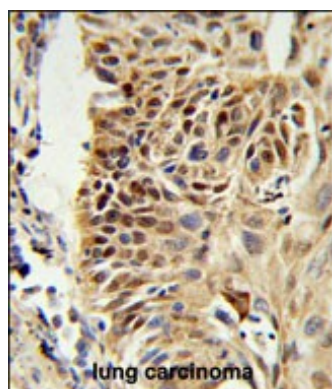
## References

Colinge J., et.al., Submitted (OCT-2008) to UniProtKB.  
Yang R.,et.al., Nucleic Acids Res. 34:1224-1236(2006).

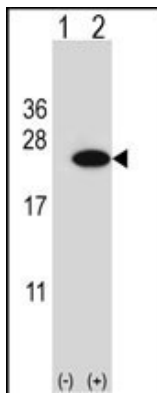
## Images



Western blot analysis of CIRBP Antibody (C-term) (Cat. #AP9139b) in Y79 cell line lysates (35ug/lane). CIRBP (arrow) was detected using the purified Pab.



CIRBP Antibody (C-term) (Cat. #AP9139b) IHC analysis in formalin fixed and paraffin embedded human lung carcinoma followed by peroxidase conjugation of the secondary antibody and DAB staining. This data demonstrates the use of the CIRBP Antibody (C-term) for immunohistochemistry. Clinical relevance has not been evaluated.



Western blot analysis of CIRBP (arrow) using rabbit polyclonal CIRBP Antibody (C-term) (Cat. #AP9139b). 293 cell lysates (2 ug/lane) either nontransfected (Lane 1) or transiently transfected (Lane 2) with the CIRBP gene.

## Citations

---

- [Cold-inducible RNA-binding protein mediates cold air inducible airway mucin production through TLR4/NF- \$\kappa\$ B signaling pathway.](#)

Please note: All products are 'FOR RESEARCH USE ONLY. NOT FOR USE IN DIAGNOSTIC OR THERAPEUTIC PROCEDURES'.