

# MEIS1 Antibody

Rabbit mAb

Catalog # AP91405

## Product Information

<b>Application</b>	WB, FC, IP
<b>Primary Accession</b>	<a href="#">O00470</a>
<b>Reactivity</b>	Rat, Human, Mouse
<b>Clonality</b>	Monoclonal
<b>Other Names</b>	Homeo box protein Meis1; Leukemogenic homolog protein; MEIS 1; Meis homeo box 1; Meis1; Meis1 mouse homolog; MEIS1 protein;
<b>Isotype</b>	Rabbit IgG
<b>Host</b>	Rabbit
<b>Calculated MW</b>	43016

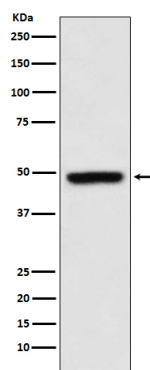
## Additional Information

<b>Dilution</b>	WB 1:1000~1:5000 IP 1:50 FC 1:50
<b>Purification</b>	Affinity-chromatography
<b>Immunogen</b>	A synthesized peptide derived from human MEIS1
<b>Description</b>	MEIS proteins belong to the TALE (Three Amino Acid Loop Extension) homeobox containing transcription factor family. MEIS1 has been associated with leukemogenesis and neuroblastoma.
<b>Storage Condition and Buffer</b>	Rabbit IgG in phosphate buffered saline , pH 7.4, 150mM NaCl, 0.02% sodium azide and 50% glycerol. Store at +4°C short term. Store at -20°C long term. Avoid freeze / thaw cycle.

## Protein Information

<b>Name</b>	MEIS1
<b>Function</b>	Acts as a transcriptional regulator of PAX6. Acts as a transcriptional activator of PF4 in complex with PBX1 or PBX2. Required for hematopoiesis, megakaryocyte lineage development and vascular patterning. May function as a cofactor for HOXA7 and HOXA9 in the induction of myeloid leukemias.
<b>Cellular Location</b>	Nucleus {ECO:0000255 PROSITE-ProRule:PRU00108}.
<b>Tissue Location</b>	Expressed at low level in normal immunohepatopoietic tissues, including the fetal liver. Expressed in a subset of myeloid leukemia cell lines, with the highest expression seen in those with a megakaryocytic-erythroid phenotype. Also expressed at high levels in the cerebellum

## Images



Western blot analysis of MEIS1 expression in K562 cell lysate.

Please note: All products are 'FOR RESEARCH USE ONLY. NOT FOR USE IN DIAGNOSTIC OR THERAPEUTIC PROCEDURES'.