

TCTP Antibody

Rabbit mAb

Catalog # AP91411

Product Information

Application	WB, IHC, IF, FC, ICC, IP, IHF
Primary Accession	P13693
Reactivity	Rat, Human, Mouse
Clonality	Monoclonal
Other Names	Fortilin; Histamine releasing factor; HRF; Immunoglobulin E-dependent; p02; p23; TCTP; tpt1;
Isotype	Rabbit IgG
Host	Rabbit
Calculated MW	19595

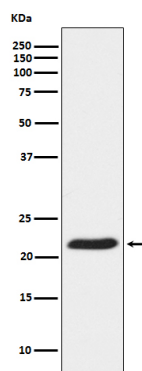
Additional Information

Dilution	WB 1:1000~1:5000 IHC 1:50~1:200 ICC/IF 1:50~1:200 IP 1:50 FC 1:100
Purification	Affinity-chromatography
Immunogen	A synthesized peptide derived from human TCTP
Description	Involved in calcium binding and microtubule stabilization.
Storage Condition and Buffer	Rabbit IgG in phosphate buffered saline , pH 7.4, 150mM NaCl, 0.02% sodium azide and 50% glycerol. Store at +4°C short term. Store at -20°C long term. Avoid freeze / thaw cycle.

Protein Information

Name	TPT1
Function	Involved in calcium binding and microtubule stabilization (PubMed: 12167714 , PubMed: 15162379 , PubMed: 15958728). Acts as a negative regulator of TSC22D1-mediated apoptosis, via interaction with and destabilization of TSC22D1 protein (PubMed: 18325344).
Cellular Location	Cytoplasm.
Tissue Location	Found in several healthy and tumoral cells including erythrocytes, hepatocytes, macrophages, platelets, keratinocytes, erythroleukemia cells, gliomas, melanomas, hepatoblastomas, and lymphomas. It cannot be detected in kidney and renal cell carcinoma (RCC). Expressed in placenta and prostate

Images



Western blot analysis of TCTP Receptor expression in HeLa cell lysate.

Please note: All products are 'FOR RESEARCH USE ONLY. NOT FOR USE IN DIAGNOSTIC OR THERAPEUTIC PROCEDURES'.