

FOLR1 Antibody

Rabbit mAb

Catalog # AP91419

Product Information

Application	WB
Primary Accession	P15328
Reactivity	Rat, Human, Mouse
Clonality	Monoclonal
Other Names	Adult folate binding protein; FBP; Folate receptor 1; Folate Receptor 1 Precursor; Folate receptor alpha; FOLR1; FR alpha; KB cells FBP;
Isotype	Rabbit IgG
Host	Rabbit
Calculated MW	29819

Additional Information

Dilution	WB 1:500~1:2000
Purification	Affinity-chromatography
Immunogen	A synthesized peptide derived from human FOLR1
Description	Binds to folate and reduced folic acid derivatives and mediates delivery of 5-methyltetrahydrofolate to the interior of cells.
Storage Condition and Buffer	Rabbit IgG in phosphate buffered saline , pH 7.4, 150mM NaCl, 0.02% sodium azide and 50% glycerol. Store at +4°C short term. Store at -20°C long term. Avoid freeze / thaw cycle.

Protein Information

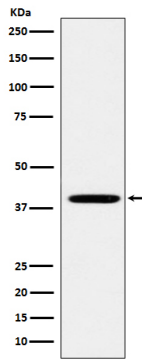
Name	FOLR1
Synonyms	FOLR
Function	Binds to folate and reduced folic acid derivatives and mediates delivery of 5-methyltetrahydrofolate and folate analogs into the interior of cells (PubMed: 19074442 , PubMed: 23851396 , PubMed: 23934049 , PubMed: 2527252 , PubMed: 8033114 , PubMed: 8567728). Has high affinity for folate and folic acid analogs at neutral pH (PubMed: 23851396 , PubMed: 23934049 , PubMed: 2527252 , PubMed: 8033114 , PubMed: 8567728). Exposure to slightly acidic pH after receptor endocytosis triggers a conformation change that strongly reduces its affinity for folates and mediates their release (PubMed: 8567728). Required for normal embryonic development and normal cell proliferation (By similarity).
Cellular Location	Cell membrane; Lipid-anchor, GPI-anchor Apical cell membrane; Lipid-anchor, GPI- anchor Basolateral cell membrane; Lipid-anchor, GPI-like-anchor. Secreted Cytoplasmic vesicle. Cytoplasmic vesicle, clathrin-coated vesicle.

Endosome. Note=Endocytosed into cytoplasmic vesicles and then recycled to the cell membrane

Tissue Location

Primarily expressed in tissues of epithelial origin. Expression is increased in malignant tissues. Expressed in kidney, lung and cerebellum. Detected in placenta and thymus epithelium.

Images



Western blot analysis of FOLR1 expression in HEK293 cell lysate.

Please note: All products are 'FOR RESEARCH USE ONLY. NOT FOR USE IN DIAGNOSTIC OR THERAPEUTIC PROCEDURES'.