

CD42b Antibody

Rabbit mAb

Catalog # AP91420

Product Information

Application	WB, IHC
Primary Accession	P07359
Reactivity	Human
Clonality	Monoclonal
Other Names	Antigen CD42b alpha; BDPLT1; BDPLT3; BSS; CD42b alpha; DBPLT3; Glycoprotein Ibalpha; GP Ib alpha; GP1B; GP1BA; GPIb alpha; GPIbA; VWDP;
Isotype	Rabbit IgG
Host	Rabbit
Calculated MW	71540

Additional Information

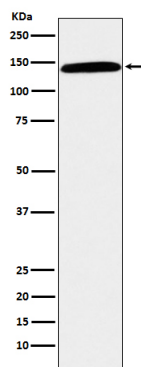
Dilution	WB 1:1000~1:5000 IHC 1:50~1:200
Purification	Affinity-chromatography
Immunogen	A synthesized peptide derived from human CD42b
Description	CD42b is a platelet activation marker involved in the process of coagulation as an aggregating factor. It interacts with extracellular matrix as well as with adhesion molecules. Its expression and activation seems to be regulated by VEGF and PDGF.
Storage Condition and Buffer	Rabbit IgG in phosphate buffered saline , pH 7.4, 150mM NaCl, 0.02% sodium azide and 50% glycerol. Store at +4°C short term. Store at -20°C long term. Avoid freeze / thaw cycle.

Protein Information

Name	GP1BA
Function	GP-Ib, a surface membrane protein of platelets, participates in the formation of platelet plugs by binding to the A1 domain of vWF, which is already bound to the subendothelium.
Cellular Location	Membrane; Single-pass type I membrane protein.

Images

Western blot analysis of CD42b expression in human spleen lysate.



Please note: All products are 'FOR RESEARCH USE ONLY. NOT FOR USE IN DIAGNOSTIC OR THERAPEUTIC PROCEDURES'.