

GLUR Antibody

Rabbit mAb

Catalog # AP91421

Product Information

Application	WB, FC
Primary Accession	P00390
Reactivity	Rat, Human, Mouse
Clonality	Monoclonal
Other Names	GLR1; GLUR; Glutathione reductase; Glutathione reductase mitochondrial; Glutathione reductase, mitochondrial; GR; Gr1; GRase; GRD1; GSR;
Isotype	Rabbit IgG
Host	Rabbit
Calculated MW	56257

Additional Information

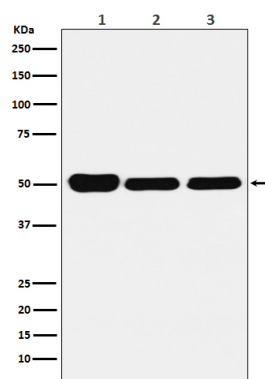
Dilution	WB 1:500~1:2000 FC 1:50
Purification	Affinity-chromatography
Immunogen	A synthesized peptide derived from human GLUR
Description	Maintains high levels of reduced glutathione in the cytosol.
Storage Condition and Buffer	Rabbit IgG in phosphate buffered saline , pH 7.4, 150mM NaCl, 0.02% sodium azide and 50% glycerol. Store at +4°C short term. Store at -20°C long term. Avoid freeze / thaw cycle.

Protein Information

Name	GSR
Synonyms	GLUR, GRD1
Function	Catalyzes the reduction of glutathione disulfide (GSSG) to reduced glutathione (GSH). Constitutes the major mechanism to maintain a high GSH:GSSG ratio in the cytosol.
Cellular Location	[Isoform Mitochondrial]: Mitochondrion.

Images

Western blot analysis of GLUR expression in (1) HeLa cell lysate; (2) Mouse brain lysate; (3) Rat kidney lysate.



Please note: All products are 'FOR RESEARCH USE ONLY. NOT FOR USE IN DIAGNOSTIC OR THERAPEUTIC PROCEDURES'.