

Calpain 2 Antibody

Rabbit mAb

Catalog # AP91423

Product Information

Application	WB
Primary Accession	P17655
Reactivity	Rat, Human, Mouse
Clonality	Monoclonal
Other Names	CALP80; Calpain M type; Calpain-2 large subunit; Calpain2; CANP2; CANPL2; CANPml; Capa2; CAPN2; M calpain; mCANP; Millimolar calpain;
Isotype	Rabbit IgG
Host	Rabbit
Calculated MW	79995

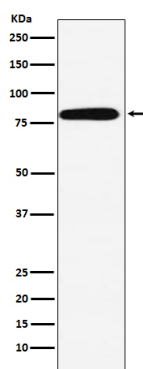
Additional Information

Dilution	WB 1:500~1:2000
Purification	Affinity-chromatography
Immunogen	A synthesized peptide derived from human Calpain 2
Description	Calcium-regulated non-lysosomal thiol-protease which catalyze limited proteolysis of substrates involved in cytoskeletal remodeling and signal transduction.
Storage Condition and Buffer	Rabbit IgG in phosphate buffered saline , pH 7.4, 150mM NaCl, 0.02% sodium azide and 50% glycerol. Store at +4°C short term. Store at -20°C long term. Avoid freeze / thaw cycle.

Protein Information

Name	CAPN2
Synonyms	CANPL2
Function	Calcium-regulated non-lysosomal thiol-protease which catalyzes limited proteolysis of substrates involved in cytoskeletal remodeling and signal transduction. Proteolytically cleaves MYOC at 'Arg-226' (PubMed: 17650508). Proteolytically cleaves CPEB3 following neuronal stimulation which abolishes CPEB3 translational repressor activity, leading to translation of CPEB3 target mRNAs (By similarity).
Cellular Location	Cytoplasm. Cell membrane. Note=Translocates to the plasma membrane upon Ca(2+) binding
Tissue Location	Ubiquitous.

Images



Western blot analysis of Calpain 2 expression in A431 cell lysate.

Please note: All products are 'FOR RESEARCH USE ONLY. NOT FOR USE IN DIAGNOSTIC OR THERAPEUTIC PROCEDURES'.