

IDH2 Antibody

Rabbit mAb

Catalog # AP91435

Product Information

Application	WB, IHC, FC
Primary Accession	P48735
Reactivity	Rat, Human, Mouse
Clonality	Monoclonal
Other Names	D2HGA2; ICD-M; IDH; IDH2; IDHM; IDP; IDPM; mNADP-IDH; NADP(+)-specific ICDH; Oxalosuccinate decarboxylase;
Isotype	Rabbit IgG
Host	Rabbit
Calculated MW	50909

Additional Information

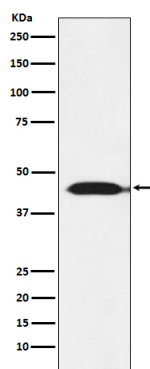
Dilution	WB 1:500~1:2000 IHC 1:50~1:200 FC 1:100
Purification	Affinity-chromatography
Immunogen	A synthesized peptide derived from human IDH2
Description	Plays a role in intermediary metabolism and energy production. It may tightly associate or interact with the pyruvate dehydrogenase complex.
Storage Condition and Buffer	Rabbit IgG in phosphate buffered saline , pH 7.4, 150mM NaCl, 0.02% sodium azide and 50% glycerol. Store at +4°C short term. Store at -20°C long term. Avoid freeze / thaw cycle.

Protein Information

Name	IDH2
Function	Plays a role in intermediary metabolism and energy production (PubMed: 19228619 , PubMed: 22416140). It may tightly associate or interact with the pyruvate dehydrogenase complex (PubMed: 19228619 , PubMed: 22416140).
Cellular Location	Mitochondrion {ECO:0000250 UniProtKB:P33198}.

Images

Western blot analysis of IDH2 expression in MOLT4 cell lysate.



Please note: All products are 'FOR RESEARCH USE ONLY. NOT FOR USE IN DIAGNOSTIC OR THERAPEUTIC PROCEDURES'.