

# SNAP23 Antibody

Rabbit mAb

Catalog # AP91437

## Product Information

---

|                          |   |
|--------------------------|---|
| <b>Application</b>       | WB  |
| <b>Primary Accession</b> | <a href="#">O00161</a>  |
| <b>Reactivity</b>        | Rat, Human, Mouse   |
| <b>Clonality</b>         | Monoclonal  |
| <b>Other Names</b>       | HsT17016; LS-B8340; SNAP23A; SNAP23B; Synaptosomal associated protein 23; Vesicle membrane fusion protein SNAP23; |
| <b>Isotype</b>           | Rabbit IgG  |
| <b>Host</b>              | Rabbit  |
| <b>Calculated MW</b>     | 23354   |

## Additional Information

---

|                                     |   |
|-------------------------------------|---|
| <b>Dilution</b>                     | WB 1:500~1:2000   |
| <b>Purification</b>                 | Affinity-chromatography   |
| <b>Immunogen</b>                    | A synthesized peptide derived from human SNAP23   |
| <b>Description</b>                  | Essential component of the high affinity receptor for the general membrane fusion machinery and an important regulator of transport vesicle docking and fusion.                   |
| <b>Storage Condition and Buffer</b> | Rabbit IgG in phosphate buffered saline , pH 7.4, 150mM NaCl, 0.02% sodium azide and 50% glycerol. Store at +4°C short term. Store at -20°C long term. Avoid freeze / thaw cycle. |

## Protein Information

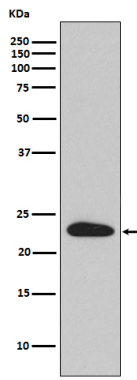
---

|                          |   |
|--------------------------|---|
| <b>Name</b>              | SNAP23  |
| <b>Function</b>          | Essential component of the high affinity receptor for the general membrane fusion machinery and an important regulator of transport vesicle docking and fusion. |
| <b>Cellular Location</b> | Cell membrane; Peripheral membrane protein. Cell membrane; Lipid-anchor. Synapse, synaptosome. Note=Mainly localized to the plasma membrane                     |
| <b>Tissue Location</b>   | Ubiquitous. Highest levels where found in placenta.   |

## Images

---

Western blot analysis of SNAP23 expression in HeLa cell lysate.



Please note: All products are 'FOR RESEARCH USE ONLY. NOT FOR USE IN DIAGNOSTIC OR THERAPEUTIC PROCEDURES'.