

GCSF Receptor (CD114) Antibody

Rabbit mAb

Catalog # AP91441

Product Information

| | |
|--------------------------|---|
| Application | WB, FC |
| Primary Accession | Q99062 |
| Reactivity | Human |
| Clonality | Monoclonal |
| Other Names | CD114 antigen; Colony stimulating factor 3 receptor (granulocyte); CSF3R; Csfgr; G-CSF receptor; GCSFR; |
| Isotype | Rabbit IgG |
| Host | Rabbit |
| Calculated MW | 92156 |

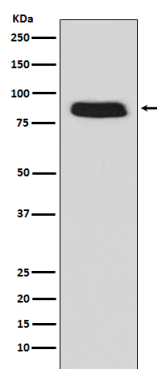
Additional Information

| | |
|-------------------------------------|--|
| Dilution | WB 1:500~1:2000 FC 1:200 |
| Purification | Affinity-chromatography |
| Immunogen | A synthesized peptide derived from human GCSF Receptor (CD114) |
| Description | Receptor for granulocyte colony-stimulating factor (CSF3), essential for granulocytic maturation. Plays a crucial role in the proliferation, differentiation and survival of cells along the neutrophilic lineage. In addition it may function in some adhesion or recognition events at the cell surface. |
| Storage Condition and Buffer | Rabbit IgG in phosphate buffered saline , pH 7.4, 150mM NaCl, 0.02% sodium azide and 50% glycerol. Store at +4°C short term. Store at -20°C long term. Avoid freeze / thaw cycle. |

Protein Information

| | |
|--------------------------|--|
| Name | CSF3R |
| Synonyms | GCSFR |
| Function | Receptor for granulocyte colony-stimulating factor (CSF3), essential for granulocytic maturation. Plays a crucial role in the proliferation, differentiation and survival of cells along the neutrophilic lineage. In addition it may function in some adhesion or recognition events at the cell surface. |
| Cellular Location | [Isoform 2]: Secreted. |
| Tissue Location | One or several isoforms have been found in myelogenous leukemia cell line KG-1, leukemia U-937 cell line, in bone marrow cells, placenta, and peripheral blood granulocytes. Isoform GCSFR-2 is found only in leukemia U-937 cells. Isoform GCSFR-3 is highly expressed in placenta |

Images



Western blot analysis of GCSF Receptor (CD114) expression in Caco-2 cell lysate.

Please note: All products are 'FOR RESEARCH USE ONLY. NOT FOR USE IN DIAGNOSTIC OR THERAPEUTIC PROCEDURES'.