

GC1q R Antibody

Rabbit mAb

Catalog # AP91442

Product Information

Application	WB, IHC
Primary Accession	Q07021
Reactivity	Rat, Human, Mouse
Clonality	Monoclonal
Other Names	ASF/SF2 associated protein p32; C1q globular domain binding protein; C1qBP; GC1Q R; GC1QBP; GC1QR; p32 splicing factor; SF2p32;
Isotype	Rabbit IgG
Host	Rabbit
Calculated MW	31362

Additional Information

Dilution	WB 1:500~1:2000 IHC 1:50~1:200
Purification	Affinity-chromatography
Immunogen	A synthesized peptide derived from human GC1q R
Description	Binds to the globular "heads" of C1Q thus inhibiting C1 activation.
Storage Condition and Buffer	Rabbit IgG in phosphate buffered saline , pH 7.4, 150mM NaCl, 0.02% sodium azide and 50% glycerol. Store at +4°C short term. Store at -20°C long term. Avoid freeze / thaw cycle.

Protein Information

Name	C1QBP
Synonyms	GC1QBP, HABP1, SF2P32
Function	Multifunctional and multicompartmental protein involved in inflammation and infection processes, ribosome biogenesis, protein synthesis in mitochondria, regulation of apoptosis, transcriptional regulation and pre-mRNA splicing (PubMed: 10022843 , PubMed: 10479529 , PubMed: 10722602 , PubMed: 11086025 , PubMed: 11859136 , PubMed: 15243141 , PubMed: 16140380 , PubMed: 16177118 , PubMed: 17881511 , PubMed: 18676636 , PubMed: 19004836 , PubMed: 19164550 , PubMed: 20810993 , PubMed: 21536856 , PubMed: 21544310 , PubMed: 22700724 , PubMed: 28942965 , PubMed: 8662673 , PubMed: 8710908 , PubMed: 9461517). At the cell surface is thought to act as an endothelial receptor for plasma proteins of the complement and kallikrein-kinin cascades (PubMed: 10479529 , PubMed: 11859136 , PubMed: 8662673 , PubMed: 8710908). Putative receptor for C1q; specifically binds to the globular 'heads' of C1q thus inhibiting C1; may perform the receptor function through a complex with C1qR/CD93 (PubMed: 20810993 ,

PubMed:[8195709](#)). In complex with cytokeratin-1/KRT1 is a high affinity receptor for kininogen-1/HMWK (PubMed:[21544310](#)). Can also bind other plasma proteins, such as coagulation factor XII leading to its autoactivation. May function to bind initially fluid kininogen-1 to the cell membrane. The secreted form may enhance both extrinsic and intrinsic coagulation pathways. It is postulated that the cell surface form requires docking with transmembrane proteins for downstream signaling which might be specific for a cell-type or response. By acting as C1q receptor is involved in chemotaxis of immature dendritic cells and neutrophils and is proposed to signal through CD209/DC-SIGN on immature dendritic cells, through integrin alpha-4/beta-1 during trophoblast invasion of the decidua, and through integrin beta-1 during endothelial cell adhesion and spreading (PubMed:[16140380](#), PubMed:[22700724](#), PubMed:[9461517](#)). Signaling involved in inhibition of innate immune response is implicating the PI3K-AKT/PKB pathway (PubMed:[16177118](#)). Required for protein synthesis in mitochondria (PubMed:[28942965](#)). In mitochondrial translation may be involved in formation of functional 55S mitoribosomes; the function seems to involve its RNA-binding activity (By similarity). Acts as a RNA modification reader, which specifically recognizes and binds mitochondrial RNAs modified by C5-methylcytosine (m5C) in response to stress, and promotes recruitment of the mitochondrial degradosome complex, leading to their degradation (PubMed:[39019044](#)). May be involved in the nucleolar ribosome maturation process; the function may involve the exchange of FBL for RRP1 in the association with pre- ribosome particles (By similarity). Involved in regulation of RNA splicing by inhibiting the RNA-binding capacity of SRSF1 and its phosphorylation (PubMed:[10022843](#), PubMed:[21536856](#)). Is required for the nuclear translocation of splicing factor U2AF1L4 (By similarity). Involved in regulation of CDKN2A- and HRK-mediated apoptosis. Stabilizes mitochondrial CDKN2A isoform smARF (PubMed:[17486078](#)). May be involved in regulation of FOXC1 transcriptional activity and NFY/CCAAT- binding factor complex-mediated transcription (PubMed:[15243141](#), PubMed:[18676636](#)). May play a role in antibacterial defense as it can bind to cell surface hyaluronan and inhibit Streptococcus pneumoniae hyaluronate lyase (PubMed:[19004836](#)). May be involved in modulation of the immune response; ligation by HCV core protein is resulting in suppression of interleukin-12 production in monocyte-derived dendritic cells (PubMed:[11086025](#), PubMed:[17881511](#)). Involved in regulation of antiviral response by inhibiting RIGI- and IFIH1-mediated signaling pathways probably involving its association with MAVS after viral infection (PubMed:[19164550](#)). Acts as a regulator of DNA repair via homologous recombination by inhibiting the activity of MRE11: interacts with unphosphorylated MRE11 and RAD50 in absence of DNA damage, preventing formation and activity of the MRN complex. Following DNA damage, dissociates from phosphorylated MRE11, allowing formation of the MRN complex (PubMed:[31353207](#)).

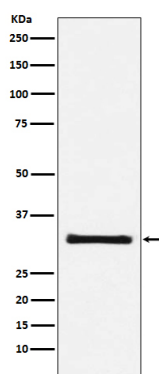
Cellular Location

Mitochondrion matrix. Nucleus. Nucleus, nucleolus Cell membrane; Peripheral membrane protein; Extracellular side. Secreted. Cytoplasm. Note=Seems to be predominantly localized to mitochondria. Secreted by activated lymphocytes. Localizes to the nucleolus when coexpressed with POLGARF (PubMed:[32958672](#)). Interaction with POLGARF is likely to result in prevention of C1QBP maturation and redirection from mitochondria to nucleoli (PubMed:[32958672](#))

Tissue Location

Expressed on cell surface of peripheral blood cells (at protein level); Surface expression is reported for macrophages and monocyte-derived dendritic cells.

Images



Western blot analysis of GC1q R expression in HeLa cell lysate.

Please note: All products are 'FOR RESEARCH USE ONLY. NOT FOR USE IN DIAGNOSTIC OR THERAPEUTIC PROCEDURES'.