

PLGF Antibody

Rabbit mAb

Catalog # AP91445

Product Information

Application	WB
Primary Accession	P49763
Reactivity	Human
Clonality	Monoclonal
Other Names	Pgf; PGFL; PIGF; Placenta growth factor; Placental growth factor, vascular endothelial growth factor related protein; PIGF; PIGF2; SHGC 10760;
Isotype	Rabbit IgG
Host	Rabbit
Calculated MW	24789

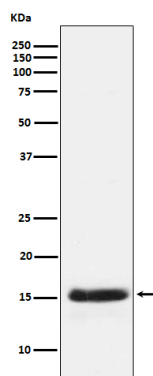
Additional Information

Dilution	WB 1:500~1:2000
Purification	Affinity-chromatography
Immunogen	A synthesized peptide derived from human PLGF
Description	Growth factor active in angiogenesis and endothelial cell growth, stimulating their proliferation and migration. It binds to the receptor FLT1/VEGFR-1. Isoform PIGF-2 binds NRP1/neuropilin-1 and NRP2/neuropilin-2 in a heparin-dependent manner.
Storage Condition and Buffer	Rabbit IgG in phosphate buffered saline , pH 7.4, 150mM NaCl, 0.02% sodium azide and 50% glycerol. Store at +4°C short term. Store at -20°C long term. Avoid freeze / thaw cycle.

Protein Information

Name	PGF
Synonyms	PGFL, PLGF
Function	Growth factor active in angiogenesis and endothelial cell growth, stimulating their proliferation and migration. It binds to the receptor FLT1/VEGFR-1. Isoform PIGF-2 binds NRP1/neuropilin-1 and NRP2/neuropilin-2 in a heparin-dependent manner. Also promotes cell tumor growth.
Cellular Location	Secreted. Note=The three isoforms are secreted but PIGF-2 appears to remain cell attached unless released by heparin
Tissue Location	While the three isoforms are present in most placental tissues, PIGF-2 is specific to early (8 week) placenta and only PIGF-1 is found in the colon and mammary carcinomas

Images



Western blot analysis of PLGF expression in human PLGF Recombinant protein.

Please note: All products are 'FOR RESEARCH USE ONLY. NOT FOR USE IN DIAGNOSTIC OR THERAPEUTIC PROCEDURES'.