

# Protein C Antibody

Rabbit mAb

Catalog # AP91449

## Product Information

---

<b>Application</b>	WB
<b>Primary Accession</b>	<a href="#">P04070</a>
<b>Reactivity</b>	Human
<b>Clonality</b>	Monoclonal
<b>Other Names</b>	Activation peptide; Anticoagulant protein C; APC; Autoprothrombin IIA; Blood coagulation factor XIV; PROC1; THPH3; THPH4; Vitamin K dependent protein C;
<b>Isotype</b>	Rabbit IgG
<b>Host</b>	Rabbit
<b>Calculated MW</b>	52071

## Additional Information

---

<b>Dilution</b>	WB 1:500~1:2000
<b>Purification</b>	Affinity-chromatography
<b>Immunogen</b>	A synthesized peptide derived from human Protein C
<b>Description</b>	Protein C is a vitamin K-dependent serine protease that regulates blood coagulation by inactivating factors Va and VIIIa in the presence of calcium ions and phospholipids (PubMed:25618265). Exerts a protective effect on the endothelial cell barrier function.
<b>Storage Condition and Buffer</b>	Rabbit IgG in phosphate buffered saline , pH 7.4, 150mM NaCl, 0.02% sodium azide and 50% glycerol. Store at +4°C short term. Store at -20°C long term. Avoid freeze / thaw cycle.

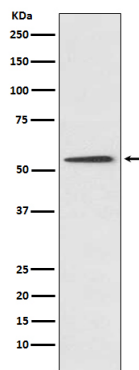
## Protein Information

---

<b>Name</b>	PROC
<b>Function</b>	Protein C is a vitamin K-dependent serine protease that regulates blood coagulation by inactivating factors Va and VIIIa in the presence of calcium ions and phospholipids (PubMed: <a href="#">25618265</a> ). Exerts a protective effect on the endothelial cell barrier function (PubMed: <a href="#">25651845</a> ).
<b>Cellular Location</b>	Secreted. Golgi apparatus Endoplasmic reticulum
<b>Tissue Location</b>	Plasma; synthesized in the liver.

## Images

---



Western blot analysis of Protein C expression in HepG2 cell lysate.

Please note: All products are 'FOR RESEARCH USE ONLY. NOT FOR USE IN DIAGNOSTIC OR THERAPEUTIC PROCEDURES'.