

BCHE Antibody

Rabbit mAb

Catalog # AP91451

Product Information

Application	WB
Primary Accession	P06276
Reactivity	Human
Clonality	Monoclonal
Other Names	BCHE; Butyrylcholine esterase; CHE1; CHE2; Choline esterase II; Cholinesterase (serum) 2; Cholinesterase 1; Cholinesterase; E1;
Isotype	Rabbit IgG
Host	Rabbit
Calculated MW	68418

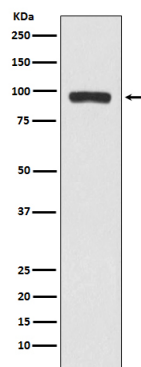
Additional Information

Dilution	WB 1:500~1:2000
Purification	Affinity-chromatography
Immunogen	A synthesized peptide derived from human BCHE
Description	Esterase with broad substrate specificity. Contributes to the inactivation of the neurotransmitter acetylcholine. Can degrade neurotoxic organophosphate esters.
Storage Condition and Buffer	Rabbit IgG in phosphate buffered saline , pH 7.4, 150mM NaCl, 0.02% sodium azide and 50% glycerol. Store at +4°C short term. Store at -20°C long term. Avoid freeze / thaw cycle.

Protein Information

Name	BCHE
Synonyms	CHE1
Function	Esterase with broad substrate specificity. Contributes to the inactivation of the neurotransmitter acetylcholine. Can degrade neurotoxic organophosphate esters.
Cellular Location	Secreted
Tissue Location	Detected in blood plasma (at protein level). Present in most cells except erythrocytes

Images



Western blot analysis of BCHE expression in A375 cell lysate.

Please note: All products are 'FOR RESEARCH USE ONLY. NOT FOR USE IN DIAGNOSTIC OR THERAPEUTIC PROCEDURES'.