

MSR1 Antibody

Rabbit mAb

Catalog # AP91457

Product Information

Application	WB
Primary Accession	P21757
Reactivity	Rat, Human, Mouse
Clonality	Monoclonal
Other Names	Macrophage scavenger receptor types I and II; Macrophage acetylated LDL receptor I and II; Scavenger receptor class A member 1; CD204; MSR1; SCARA1;
Isotype	Rabbit IgG
Host	Rabbit
Calculated MW	49762

Additional Information

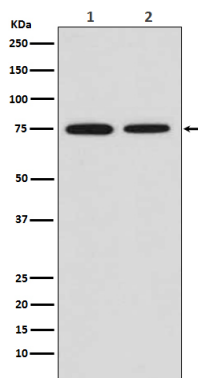
Dilution	WB 1:500~1:2000
Purification	Affinity-chromatography
Immunogen	A synthesized peptide derived from human MSR1
Description	Membrane glycoproteins implicated in the pathologic deposition of cholesterol in arterial walls during atherogenesis. Two types of receptor subunits exist. These receptors mediate the endocytosis of a diverse group of macromolecules, including modified low density lipoproteins (LDL). Isoform III does not internalize acetylated LDL.
Storage Condition and Buffer	Rabbit IgG in phosphate buffered saline , pH 7.4, 150mM NaCl, 0.02% sodium azide and 50% glycerol. Store at +4°C short term. Store at -20°C long term. Avoid freeze / thaw cycle.

Protein Information

Name	MSR1
Synonyms	SCARA1
Function	Membrane glycoproteins implicated in the pathologic deposition of cholesterol in arterial walls during atherogenesis. Two types of receptor subunits exist. These receptors mediate the endocytosis of a diverse group of macromolecules, including modified low density lipoproteins (LDL) (PubMed: 2251254). Isoform III does not internalize acetylated LDL (PubMed: 9548586).
Cellular Location	Membrane; Single-pass type II membrane protein.
Tissue Location	Isoform I, isoform II and isoform III are expressed in monocyte-derived

macrophages. Isoform I and isoform II are expressed in the liver, placenta and brain.

Images



Western blot analysis of MSR1 expression in (1) HeLa cell lysate; (2) Mouse placenta lysate.

Please note: All products are 'FOR RESEARCH USE ONLY. NOT FOR USE IN DIAGNOSTIC OR THERAPEUTIC PROCEDURES'.