

# EDG2 Antibody

Rabbit mAb

Catalog # AP91466

## Product Information

<b>Application</b>	WB, IHC, IP
<b>Primary Accession</b>	<a href="#">Q92633</a>
<b>Reactivity</b>	Human
<b>Clonality</b>	Monoclonal
<b>Other Names</b>	Lysophosphatidic acid receptor 1; LPA receptor 1; LPA-1; Lysophosphatidic acid receptor Edg-2; LPAR1; EDG2; LPA1;
<b>Isotype</b>	Rabbit IgG
<b>Host</b>	Rabbit
<b>Calculated MW</b>	41109

## Additional Information

<b>Dilution</b>	WB 1:500~1:2000 IHC 1:50~1:200 IP 1:50
<b>Purification</b>	Affinity-chromatography
<b>Immunogen</b>	A synthesized peptide derived from human EDG2
<b>Description</b>	Receptor for lysophosphatidic acid (LPA), a mediator of diverse cellular activities. Seems to be coupled to the G(i)/G(o), G(12)/G(13), and G(q) families of heteromeric G proteins. Stimulates phospholipase C (PLC) activity in a manner that is dependent on RALA activation.
<b>Storage Condition and Buffer</b>	Rabbit IgG in phosphate buffered saline , pH 7.4, 150mM NaCl, 0.02% sodium azide and 50% glycerol. Store at +4°C short term. Store at -20°C long term. Avoid freeze / thaw cycle.

## Protein Information

<b>Name</b>	LPAR1
<b>Synonyms</b>	EDG2, LPA1
<b>Function</b>	Receptor for lysophosphatidic acid (LPA) (PubMed: <a href="#">19306925</a> , PubMed: <a href="#">25025571</a> , PubMed: <a href="#">26091040</a> , PubMed: <a href="#">9070858</a> ). Plays a role in the reorganization of the actin cytoskeleton, cell migration, differentiation and proliferation, and thereby contributes to the responses to tissue damage and infectious agents. Activates downstream signaling cascades via the G(i)/G(o), G(12)/G(13), and G(q) families of heteromeric G proteins. Signaling inhibits adenylyl cyclase activity and decreases cellular cAMP levels (PubMed: <a href="#">26091040</a> ). Signaling triggers an increase of cytoplasmic Ca(2+) levels (PubMed: <a href="#">19656035</a> , PubMed: <a href="#">19733258</a> , PubMed: <a href="#">26091040</a> ). Activates RALA; this leads to the activation of phospholipase C (PLC) and the formation of inositol 1,4,5-trisphosphate (PubMed: <a href="#">19306925</a> ). Signaling mediates activation of down-stream MAP kinases (By similarity). Contributes to the

regulation of cell shape. Promotes Rho-dependent reorganization of the actin cytoskeleton in neuronal cells and neurite retraction (PubMed:[26091040](#)). Promotes the activation of Rho and the formation of actin stress fibers (PubMed:[26091040](#)). Promotes formation of lamellipodia at the leading edge of migrating cells via activation of RAC1 (By similarity). Through its function as LPA receptor, plays a role in chemotaxis and cell migration, including responses to injury and wounding (PubMed:[18066075](#), PubMed:[19656035](#), PubMed:[19733258](#)). Plays a role in triggering inflammation in response to bacterial lipopolysaccharide (LPS) via its interaction with CD14. Promotes cell proliferation in response to LPA (By similarity). Inhibits the intracellular ciliogenesis pathway in response to LPA and through AKT1 activation (PubMed:[31204173](#)). Required for normal skeleton development. May play a role in osteoblast differentiation. Required for normal brain development. Required for normal proliferation, survival and maturation of newly formed neurons in the adult dentate gyrus. Plays a role in pain perception and in the initiation of neuropathic pain (By similarity).

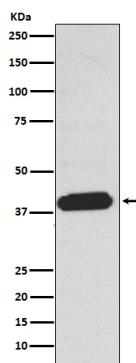
### Cellular Location

Cell surface. Cell membrane; Multi-pass membrane protein. Endosome  
Note=Prior to LPA treatment found predominantly at the cell surface  
Internalized after LPA treatment. Colocalizes with RALA in endocytic vesicles after LPA treatment.

### Tissue Location

Expressed in many adult organs, including brain, heart, colon, small intestine, placenta, prostate, ovary, pancreas, testes, spleen, skeletal muscle, and kidney. Little or no expression in liver, lung, thymus, or peripheral blood leukocytes (PubMed:[9070858](#)) Detected in lung fibroblasts from bronchoalveolar fluid from patients with idiopathic pulmonary fibrosis (PubMed:[18066075](#)). Detected in bone marrow-derived mesenchymal stem cells (PubMed:[19733258](#))

## Images



Western blot analysis of EDG2 expression in A375 cell lysate.

Please note: All products are 'FOR RESEARCH USE ONLY. NOT FOR USE IN DIAGNOSTIC OR THERAPEUTIC PROCEDURES'.