

Eg5 Antibody

Rabbit mAb

Catalog # AP91468

Product Information

Application	WB, IF, ICC, IP
Primary Accession	P52732
Reactivity	Human
Clonality	Monoclonal
Other Names	EG5; HKSP; Kinesin family member 11; Kinesin like protein 1; Kinesin-like protein KIF11; KNSL1; MCLMR; TR-interacting protein 5; TRIP5;
Isotype	Rabbit IgG
Host	Rabbit
Calculated MW	119159

Additional Information

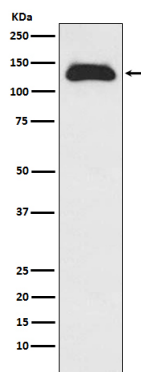
Dilution	WB 1:500~1:2000 ICC/IF 1:50~1:200 IP 1:50
Purification	Affinity-chromatography
Immunogen	A synthesized peptide derived from human Eg5
Description	Motor protein required for establishing a bipolar spindle. Blocking of KIF11 prevents centrosome migration and arrest cells in mitosis with monoastrol microtubule arrays.
Storage Condition and Buffer	Rabbit IgG in phosphate buffered saline , pH 7.4, 150mM NaCl, 0.02% sodium azide and 50% glycerol. Store at +4°C short term. Store at -20°C long term. Avoid freeze / thaw cycle.

Protein Information

Name	KIF11
Synonyms	EG5, KNSL1, TRIP5
Function	Motor protein required for establishing a bipolar spindle and thus contributing to chromosome congression during mitosis (PubMed: 19001501 , PubMed: 37728657). Required in non-mitotic cells for transport of secretory proteins from the Golgi complex to the cell surface (PubMed: 23857769).
Cellular Location	Cytoplasm. Cytoplasm, cytoskeleton, spindle pole

Images

Western blot analysis of Eg5 expression in Raji cell lysate.



Please note: All products are 'FOR RESEARCH USE ONLY. NOT FOR USE IN DIAGNOSTIC OR THERAPEUTIC PROCEDURES'.