

GAL4 Antibody

Rabbit mAb

Catalog # AP91473

Product Information

Application	WB, IHC
Primary Accession	P56470
Reactivity	Rat, Human
Clonality	Monoclonal
Other Names	L36LBP; Lactose binding lectin 4; Lectin galactoside binding soluble 4; LGALS4;
Isotype	Rabbit IgG
Host	Rabbit
Calculated MW	35941

Additional Information

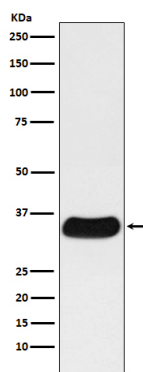
Dilution	WB 1:500~1:2000 IHC 1:50~1:200
Purification	Affinity-chromatography
Immunogen	A synthesized peptide derived from human GAL4
Description	Galectin that binds lactose and a related range of sugars. May be involved in the assembly of adherens junctions.
Storage Condition and Buffer	Rabbit IgG in phosphate buffered saline , pH 7.4, 150mM NaCl, 0.02% sodium azide and 50% glycerol. Store at +4°C short term. Store at -20°C long term. Avoid freeze / thaw cycle.

Protein Information

Name	LGALS4
Function	Galectin that binds lactose and a related range of sugars. May be involved in the assembly of adherens junctions.

Images

Western blot analysis of GAL4 expression in rat small intestine lysate.



Please note: All products are 'FOR RESEARCH USE ONLY. NOT FOR USE IN DIAGNOSTIC OR THERAPEUTIC PROCEDURES'.