

COUP TF1 Antibody

Rabbit mAb

Catalog # AP91478

Product Information

Application	WB, IHC, IF, FC, ICC, IHF
Primary Accession	P10589
Reactivity	Rat, Human, Mouse
Clonality	Monoclonal
Other Names	COUP-TF1; EAR3; ERBAL3; NR2F1; NR2F2; Nuclear receptor subfamily 2 group F member 1; SVP44; TCFCOUP1; TFCOUP1;
Isotype	Rabbit IgG
Host	Rabbit
Calculated MW	46156

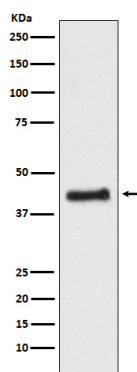
Additional Information

Dilution	WB 1:500~1:1000 IHC 1:50~1:200 ICC/IF 1:50~1:200 FC 1:50
Purification	Affinity-chromatography
Immunogen	A synthesized peptide derived from human COUP TF1
Description	Coup (chicken ovalbumin upstream promoter) transcription factor binds to the ovalbumin promoter and, in conjunction with another protein (S300-II) stimulates initiation of transcription. Binds to both direct repeats and palindromes of the 5'-AGGTCA-3' motif. Represses transcriptional activity of LHCG.
Storage Condition and Buffer	Rabbit IgG in phosphate buffered saline , pH 7.4, 150mM NaCl, 0.02% sodium azide and 50% glycerol. Store at +4°C short term. Store at -20°C long term. Avoid freeze / thaw cycle.

Protein Information

Name	NR2F1
Synonyms	EAR3, ERBAL3, TFCOUP1
Function	Coup (chicken ovalbumin upstream promoter) transcription factor binds to the ovalbumin promoter and, in conjunction with another protein (S300-II) stimulates initiation of transcription. Binds to both direct repeats and palindromes of the 5'-AGGTCA-3' motif. Represses transcriptional activity of LHCG.
Cellular Location	Nucleus.

Images



Western blot analysis of COUP TF1 expression in HEK293 cell lysate.

Please note: All products are 'FOR RESEARCH USE ONLY. NOT FOR USE IN DIAGNOSTIC OR THERAPEUTIC PROCEDURES'.