

CCR8 Antibody

Rabbit mAb

Catalog # AP91487

Product Information

Application	WB, IF, ICC
Primary Accession	P51685
Reactivity	Rat, Human, Mouse
Clonality	Monoclonal
Other Names	CY6; TER1; CCR-8; CKRL1; CDw198; CMKBR8; GPRCY6; CMKBRL2; CC-CKR-8; TER1;
Isotype	Rabbit IgG
Host	Rabbit
Calculated MW	40844

Additional Information

Dilution	WB 1:500~1:1000 ICC/IF 1:50~1:200
Purification	Affinity-chromatography
Immunogen	A synthesized peptide derived from human CCR8
Description	Receptor for the chemokine CCL1/SCYA1/I-309. May regulate monocyte chemotaxis and thymic cell line apoptosis. Alternative coreceptor with CD4 for HIV-1 infection.
Storage Condition and Buffer	Rabbit IgG in phosphate buffered saline , pH 7.4, 150mM NaCl, 0.02% sodium azide and 50% glycerol. Store at +4°C short term. Store at -20°C long term. Avoid freeze / thaw cycle.

Protein Information

Name	CCR8
Synonyms	CKRL1, CMKBR8, CMKBRL2
Function	Receptor for the chemokine CCL1/SCYA1/I-309. May regulate monocyte chemotaxis and thymic cell line apoptosis. Alternative coreceptor with CD4 for HIV-1 infection.
Cellular Location	Cell membrane; Multi-pass membrane protein.

Images

Western blot analysis of CCR8 expression in Jurkat cell lysate.

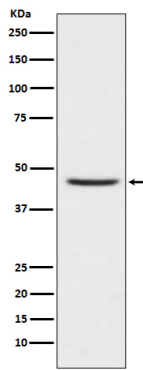


Image not found : 202311/AP91487-IF.jpg

Immunofluorescent analysis of HeLa cells, using CCR8 Antibody .

Please note: All products are 'FOR RESEARCH USE ONLY. NOT FOR USE IN DIAGNOSTIC OR THERAPEUTIC PROCEDURES'.